



**SPECIALIZED
IN SUPPLYING
ELEVATOR AND ESCALATOR
COMPONENTS**

INTRODUCING

Thuan Anh Co.,Ltd is one of the top suppliers specializing in providing a wide range of elevator and escalator components in Vietnam. Being for many years in elevator field, with our strong experiences, we are proud of providing the best quality products in the market which are now widely delivered all around the country.

With the capacity proven in the actual market, Thuan Anh Co., has got the trust and prestige, result in the fact that we are now selling distributor of many famous multinational corporations such as: Sicor S.p.a, Prisma S.p.a, Monterferro S.p.a, Vemas Lift, Ziel-Abegg,....

We are supplying a diversity of products from the smallest part to the complete product cluster for elevator. With the professional staff, global quality products, we are assured to satisfy all of customer's requirements, step by step to reach our vision:
"Converge quality - elevate brand"

STRENGTH IN QUALITY

With experiences in Import-Export Field in many years, Thuan Anh Co., Ltd could find and cooperate with suppliers providing products which are not only high quality but also suitable for Vietnam market.

STRENGTH IN PRODUCT

Specialized in importing as well as being a wholesale for elevator components, Thuan Anh Co., Ltd could offer the most competitive price in the market. By optimizing the transportation cost, storage cost as well as other import costs, customers who buy our products can be completely satisfied to get good products with reasonable prices.





TABLE OF CONTENT

■ INTRODUCING	Page 2
■ DOOR DEVICE	Page 4
■ GUIDE RAILS	Page 14
■ GOVERNOR	Page 17
■ WIRE ROPE	Page 18
■ FLAT CABLE	Page 19
■ PHOTOCCELL	Page 20
■ OTHER SPARE PARTS	Page 22
■ ITALIAN TRACTION MACHINE (SICOR)	Page 26
■ ITALIAN INVERTER (SICOR)	Page 32
■ GERMANY TRACTION MACHINE (ZIEHL-ABEGG)	Page 34
■ GERMANY INVERTER (ZIEHL-ABEGG)	Page 40

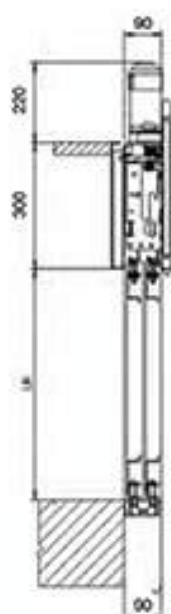


Standard sill

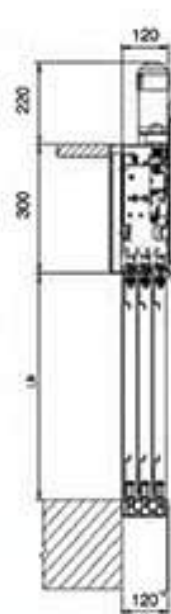
Mini sill



C1S/R-L - C2C



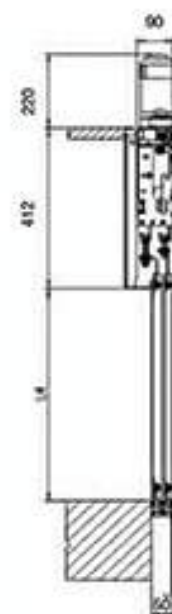
C2S/R-L - C4C



C3S/R-L - C6C



C1S/R-L - C2C



C2S/R-L - C4C



C3S/R-L - C6C

Ideal for modernization, recommended for MRL installations. Reduced overall dimensions, the footprint is as narrow as the sill.

STANDARD or MINI SILL execution, with the place requirement of the sill reduced to 25 mm for each sliding groove.

DC motor controlled by the FOX electronic drive, powered with single phase current 230V.

1, 2, 3, and 4 panels opening range. Built-in car door zone looking system between the floors.

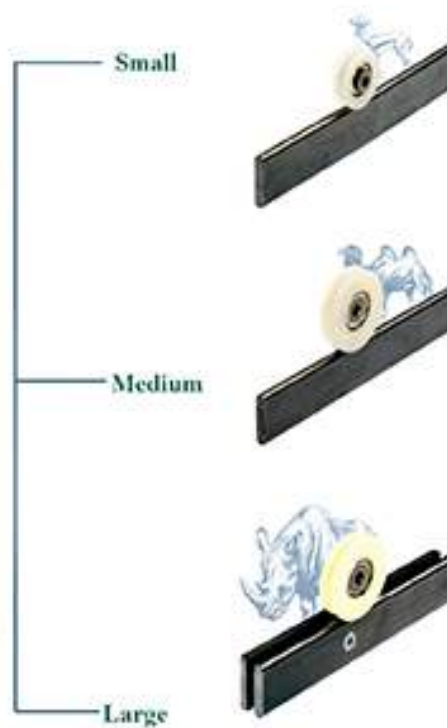
Built-in emergency re-opening system, (batteries optional). Easy setup and customization of opening and closing profiles.



OPENING LANING DOOR DEVICE - SERIE Q



SERIE Q



L1S/R-L

1 panels opening side door device



L2S/R-L

2 panels opening side door device



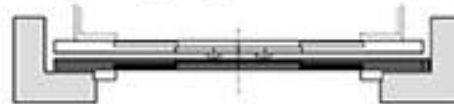
L3S/R-L

3 panels opening side door device



L2C

2 panels opening center door device



L4C

4 panels opening center door device



L6C

6 panels opening side door device

Fraction machine & inverter

Other spare parts

LOP & COP

PhotoCell

Wire rope & flat cable

Governor

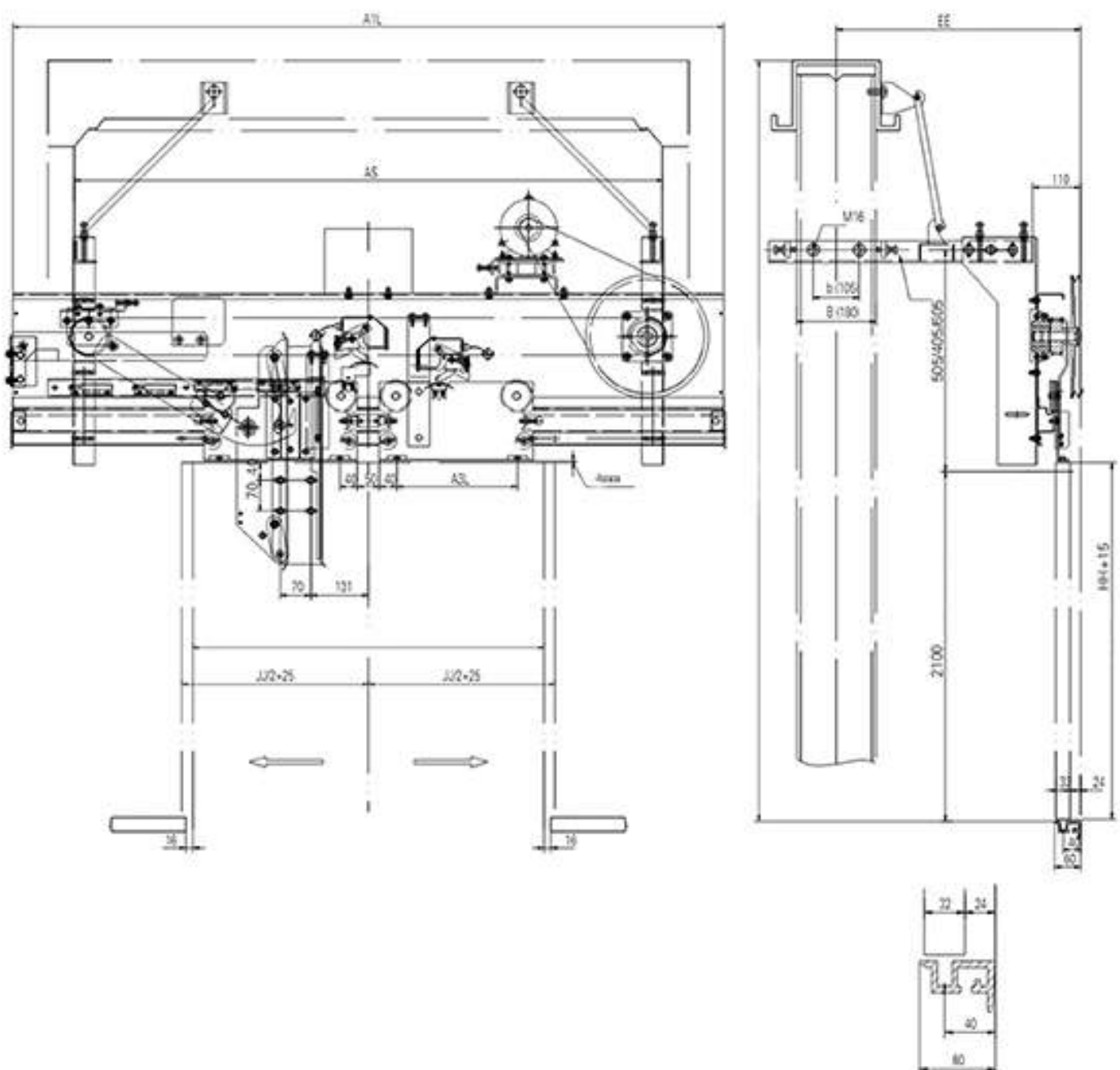
Guide rail

Prisma door device

2 LEAF CENTER OPENING VVVF DOOR OPERATOR



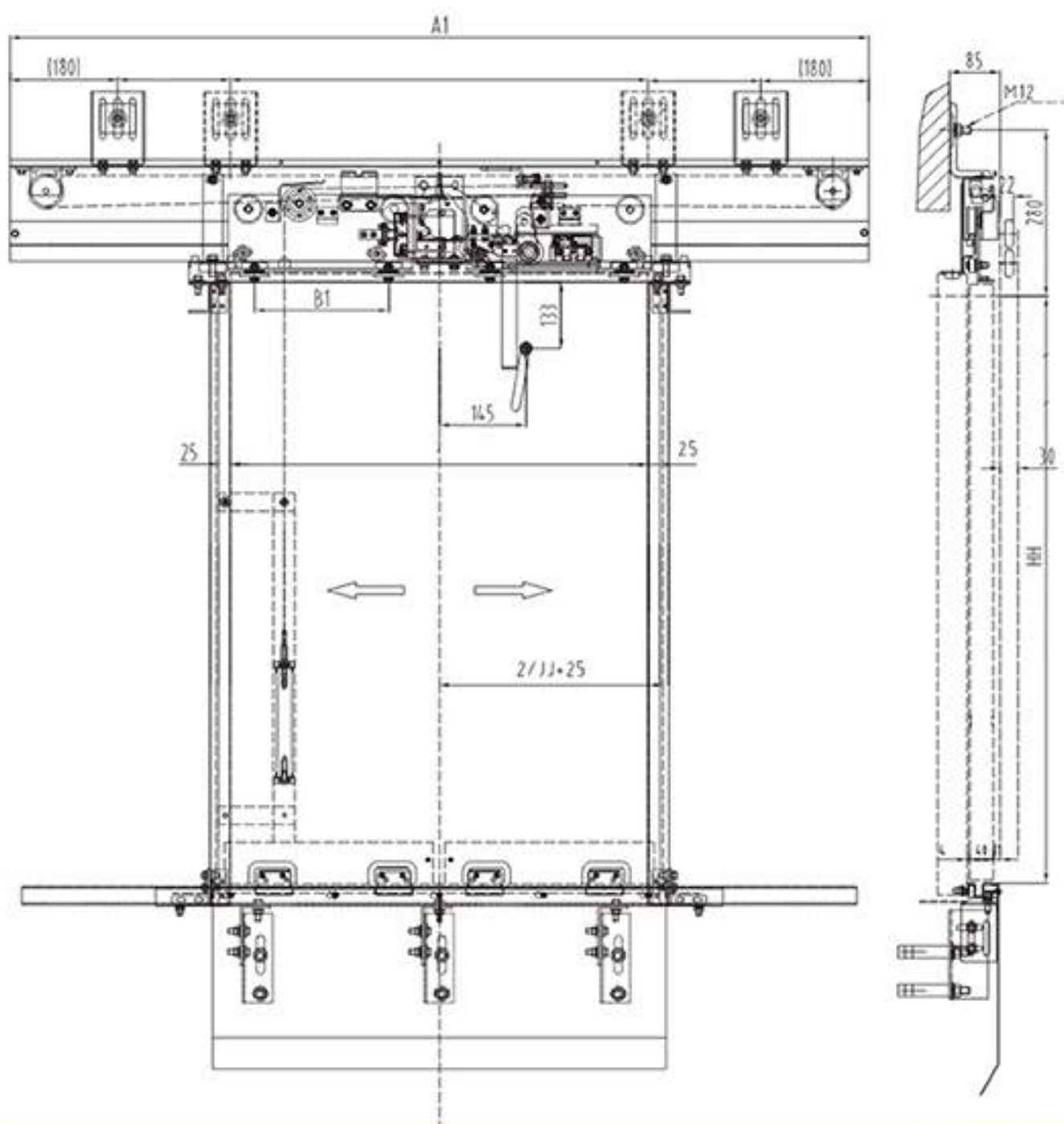
JJ	600	650	700	750	800	850	900	950	1000	1050	1100	1150	1200
A1L	1220	1360	1460	1560	1660	1760	1860	1960	2060	2160	2260	2360	2460
A3L	175	200	225	250	275	300	325	350	375	400	425	450	475



2 LEAF CENTER OPENING LANDING DOOR DEVICE



JJ	600	650	700	750	800	850	900	950	1000	1050	1100	1150	1200
A1	1220	1320	1420	1520	1620	1720	1820	1920	2020	2120	2220	2320	2420
B1	175	200	225	250	275	300	325	350	375	400	425	450	475



Traction machine & bích tán

Other spare parts

LOP & COP

Photocell

Wire rope & flat cable

Governor

Guide rail

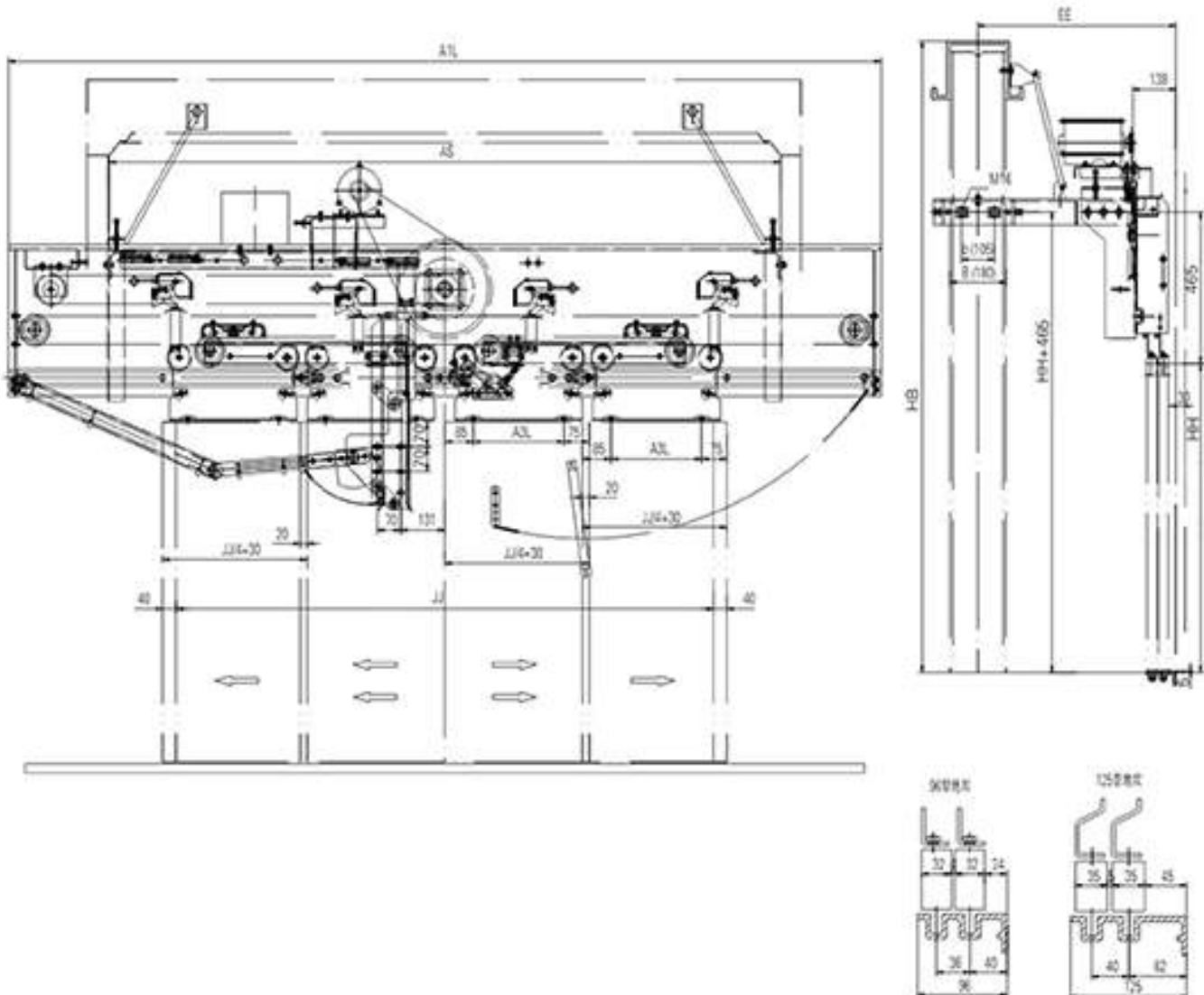
Ningbo door device

ĐẦU CỬA CAR 4 CÁNH MỞ TRUNG TÂM



JJ	1400	1500	1600	1700	1800	1900	2000	2100	2200	2300	2400	2500	2600	2700	2800	2900	3000
AIL	2300	2450	2600	2750	2900	3050	3200	3350	3500	3650	3800	3950	4110	4250	4400	4550	4700
BIL	220	245	270	295	320	345	370	395	450	445	470	495	520	545	570	595	620

AC 220V, Rated Power: 50-60 Hz, Rated current: 2.8A



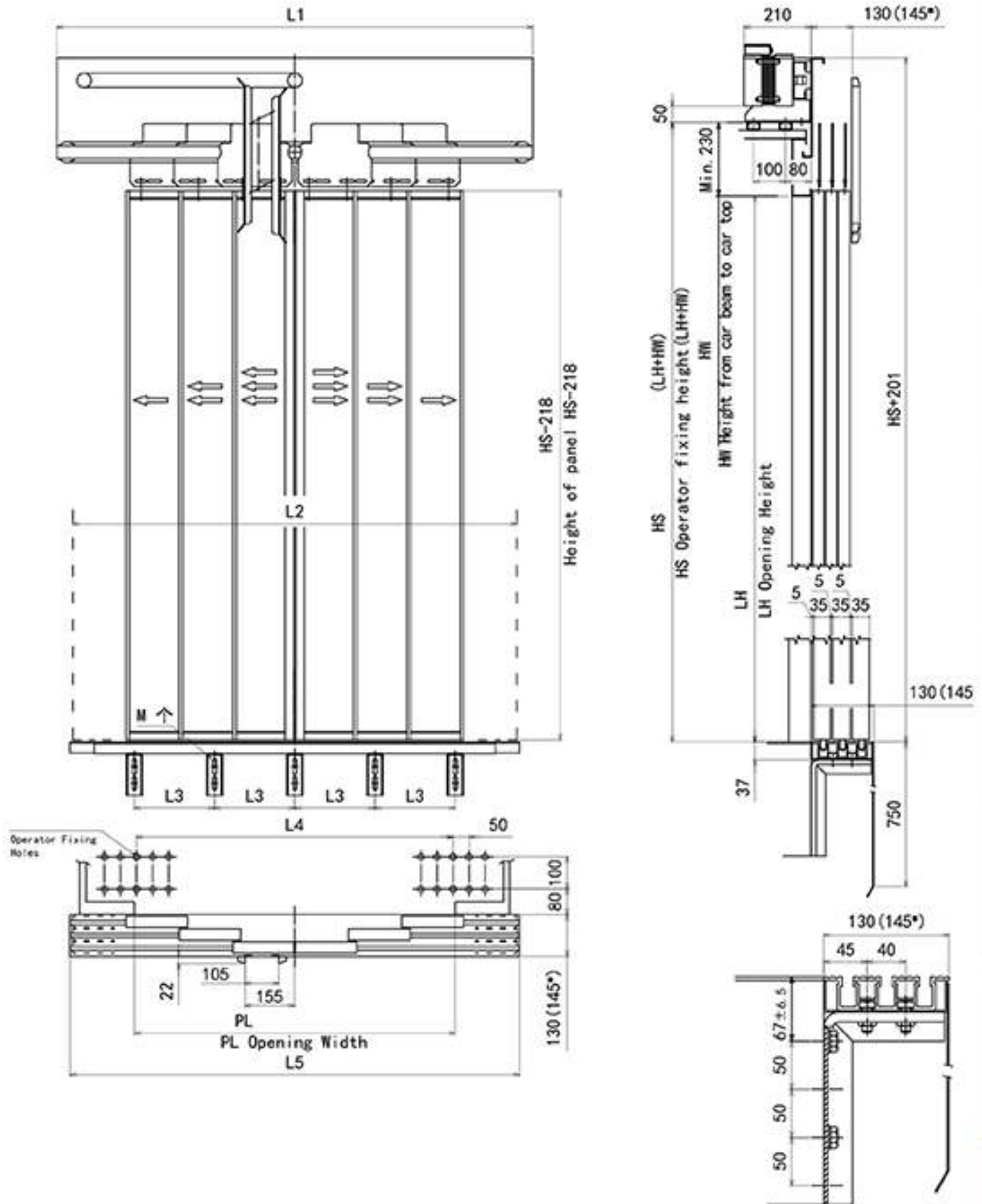
6 PANELS CENTER OPENING CAR DOOR

PL	900	950	1000	1050	1100	1150	1200	1250	1300	1350	1400	1450	1500
L1	1380	1427	1473	1520	1587	1653	1720	1787	1853	1920	1987	2053	2120
L2	1300	1350	1400	1450	1517	1583	1650	1717	1783	1850	1917	1983	2050
L3	250	250	250	200	200	200	200	200	200	200	275	275	354
L4	886	936	986	1036	1086	1136	1186	1236	1286	1336	1386	1436	1486
L5	1300	1350	1400	1450	1500	1533	1600	1667	1733	1800	1867	1933	2000
M	4	4	5	5	5	5	5	5	5	5	5	5	6
PL	1550	1600	1650	1700	1750	1800	1850	1900	1950	2000	2050	2100	2150
L1	2187	2253	2320	2387	2453	2520	2587	2653	2720	2787	2853	2920	2987
L2	2117	2183	2250	2317	2383	2450	2517	2583	2650	2717	2783	2850	2917
L3	364	390	400	410	420	220	225	230	235	240	245	250	255
L4	1536	1586	1636	1686	1736	1786	1836	1886	1936	1986	2036	2086	2136
L5	2067	2133	2200	2267	2333	2400	2467	2533	2600	2667	2733	2800	2867
M	6	6	6	6	6	9	9	9	9	9	9	9	9



PL	2200	2250	2300	2350	2400	2450	2500	2550	2600	2650	2700	2750	2800
L1	3053	3120	3187	3253	3320	3327	3393	3460	3527	3593	3660	3727	3793
L2	2983	3050	3117	3183	3250	3317	3383	3450	3517	3583	3650	3717	3783
L3	260	265	205	209	212	216	219	223	227	230	243	247	250
L4	2186	2236	2286	2336	2386	2436	2486	2536	2586	2636	2686	2736	2786
L5	2933	3000	3067	3133	3200	3267	3333	3400	3467	3533	3600	3667	3733
M	9	9	11	11	11	11	13	13	13	13	13	13	13
PL	2850	2900	2950	3000	3050	3100	3150	3200	3250	3300	3350	3400	3450
L1	3860	3927	3993	4060	4127	4193	4260	4327	4393	4460	4527	4593	4660
L2	3850	3917	3983	4050	4117	4183	4250	4317	4383	4450	4517	4517	4650
L3	197	200	203	206	208	211	214	217	220	222	225	225	231
L4	2836	2886	2936	2986	3036	3086	3136	3186	3236	3286	3336	3336	3436
L5	3800	3867	3933	4000	4067	4133	4200	4267	4333	4400	4467	4467	4600
M	13	13	13	13	13	13	13	13	13	13	13	13	13

6 PANELS CENTER OPENING CAR DOOR



* Note: Only for car sill width=145

Traction machine & Inverter

Other spare parts

LOP & COP

Photocell

Wire rope & Flat cable

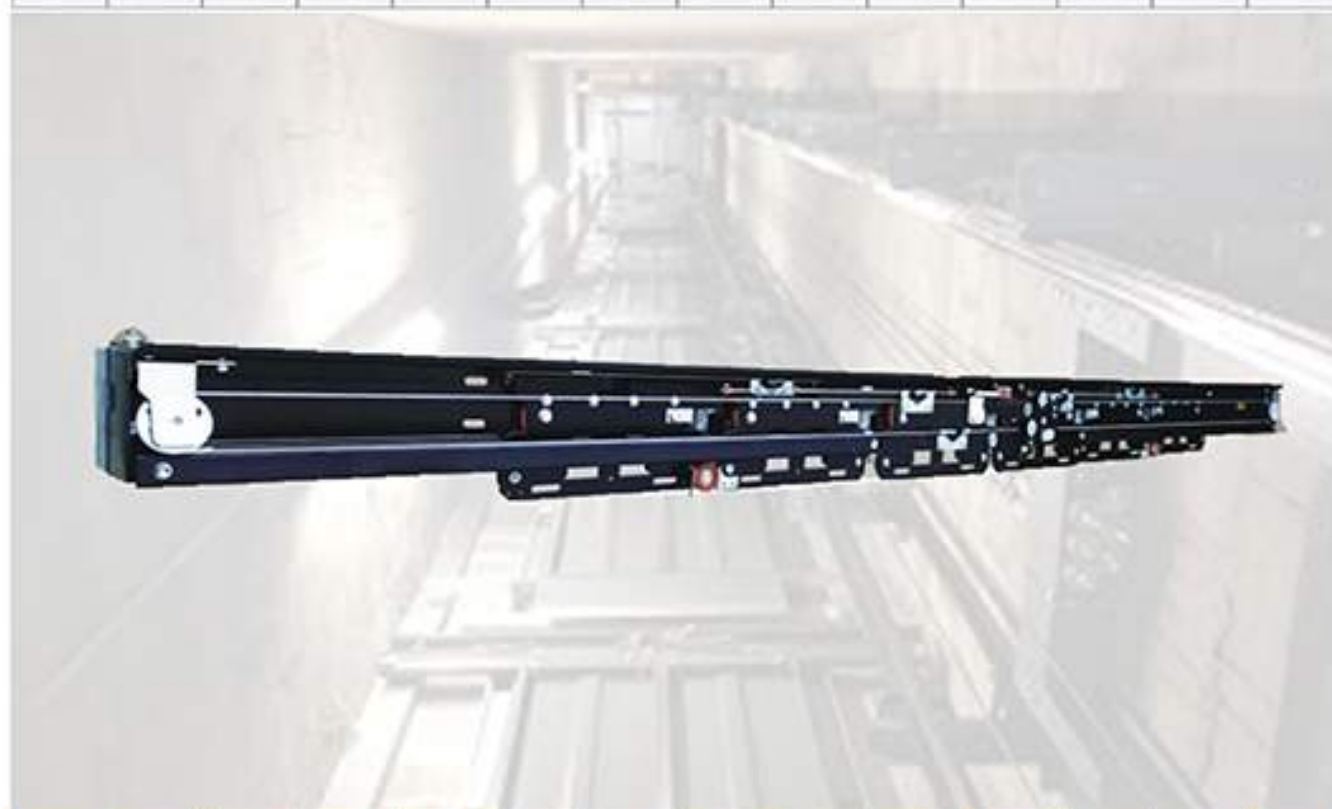
Governor

Guide rail

Ningbo door device

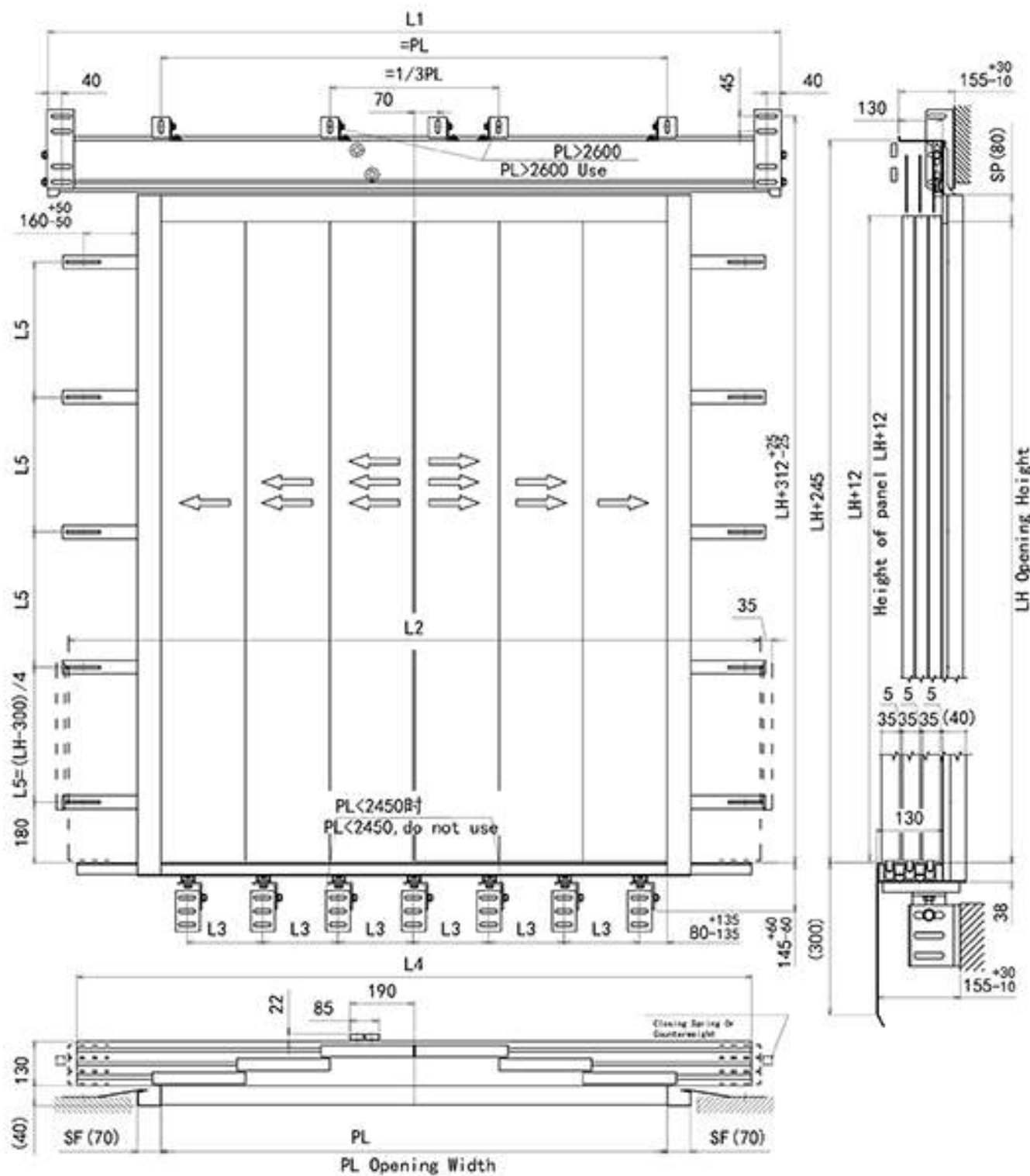
6 PANELS CENTER OPENING CAR DOOR

PL	900	950	1000	1050	1100	1150	1200	1250	1300	1350	1400	1450	1500
L1	1430	1477	1523	1570	1637	1703	1770	1837	1903	1970	2037	2103	2170
L2	1300	1350	1400	1450	1517	1583	1650	1717	1783	1850	1917	1983	2050
L3	370	395	420	445	470	495	520	545	570	595	620	323	335
L4	1300	1350	1400	1450	1500	1533	1600	1667	1733	1800	1867	1933	2000
PL	1550	1600	1650	1700	1750	1800	1850	1900	1950	2000	2050	2100	2150
L1	2237	2303	2370	2437	2503	2570	2637	2703	2770	2837	2903	2970	3037
L2	2117	2183	2250	2317	2383	2450	2517	2583	2650	2717	2783	2850	2917
L3	348	348	373	385	398	410	423	435	448	460	473	485	498
L4	2067	2067	2200	2267	233	2400	2467	2533	2600	2667	2733	2800	2867



PL	2200	2250	2300	2350	2400	2450	2500	2550	2600	2650	2700	2750	2800
L1	3103	3170	3237	3303	3370	3377	3443	3510	3577	3643	3710	3777	3843
L2	2983	3050	3117	3183	3250	3317	3383	3450	3517	3583	3650	3717	3783
L3	510	523	535	547	560	382	390	398	407	415	423	432	440
L4	2933	3000	3067	3133	3200	3267	3333	3400	3467	3533	3600	3667	3733
PL	2850	2900	2950	3000	3050	3100	3150	3200	3250	3300	3350	3400	3450
L1	3910	3977	4043	4110	4177	4243	4310	4377	4443	4510	4577	4643	4777
L2	3850	3917	3983	4050	4117	4183	4250	4317	4383	4450	4517	4583	4717
L3	448	457	465	473	482	490	498	507	515	523	532	540	557
L4	3800	3867	3933	4000	4067	4133	4200	4267	4333	4400	4467	4533	4667

6 PANELS CENTER OPENING LANDING DOOR DEVICE



Traction machine & Inverter

Other spare part

LOP & COP

PhotoCell

Wire rope & Flat cable

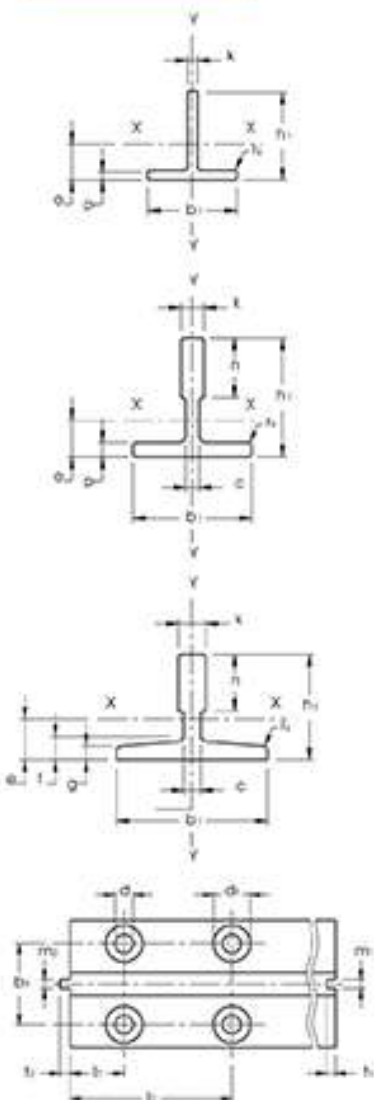
Governor

Guide rail

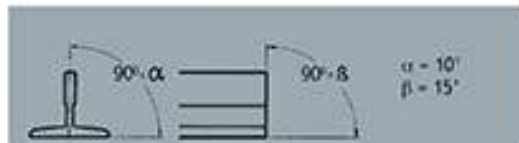
Ningbo door device



DIMENSIONS



	ISO Code	b ₁ mm	h ₁ mm	k mm	n mm
		±0,5	±0,2	±0,15	
RT 40	—	40	40	5	
RT 45	T 45/A	45	45	5	
RT 45 M/F	—	45	45	5	
RT 50	T 50/A	50	50	5	
RT 50 M/F	—	50	50	5	
Tolerances		±1,5	±0,1	+0,1/0	+3/0
RT 70	T 70-2/A	70	70	8	
RT 80	—	80	80	9	
		±1,5	±0,1	+0,1/0	+3/0
RF 50	—	50	50	9	35
RF 70	T 70-1/A	70	65	9	34
RF 70,9	—	70	70	9	35
RF 75	T 75-3/A	75	62	10	30
		±1,5	±0,1	+0,1/0	+3/0
RF 65	—	65	54	7,9	20
RF 82	T 82/A	82,5	68,25	9	25,4
RF 89	T 89/A	89	62	15,88	33,4
RF 90	T 90/A	90	75	16	42



Traction machine & Inverter

Other spare parts

LOP & COP

Protocoll

Wire rope & Flat cable

Governor

Guide rail

Door device

TECHNICAL CHARACTERISTICS

	ISO Code	S cm ²	q ₁ kg/m	e cm	I _{xx} cm ⁴	W _{xx} cm ³	I _{yy} cm ⁴	I _{yy} cm ⁴	W _{yy} cm ³	I _{yy} cm ⁴
RT40	---	3,7	2,95	1,18	5,52	1,95	1,21	2,67	1,33	0,84
RT45	T45/A	4,25	3,34	1,31	8,08	2,53	1,38	3,84	1,71	0,95
RT50	T50/A	4,75	3,73	1,43	11,24	3,15	1,54	5,25	2,1	1,05
RT70	T70-2/A	10,52	8,26	2,02	47,43	9,63	2,12	23,13	6,61	1,48
RT80	---	13,56	10,65	2,32	80,2	14,21	2,44	38,83	9,7	1,69
RF50	---	7,07	5,55	1,70	17,36	5,26	1,57	7,02	2,81	0,99
RF70	T70-1/A	9,51	7,47	2,04	41,3	9,24	2,09	18,65	5,35	1,40
RF70.9	---	11,25	8,83	2,11	52,81	10,79	2,16	24,62	7,03	1,48
RF75	T75-3/A	10,99	8,63	1,86	40,35	9,29	1,92	26,49	7,06	1,55
RF65	---	6,24	4,9	1,71	20,09	5,44	1,79	10,92	3,36	1,32
RF82	T82/A	10,9	8,55	1,98	49,4	10,2	2,13	30,5	7,4	1,67
RF89	T89/A	15,7	12,3	2,02	59,52	14,25	1,95	52,4	11,8	1,83
RF90	T90/A	17,25	13,55	2,61	102	20,87	2,43	52,6	11,8	1,75

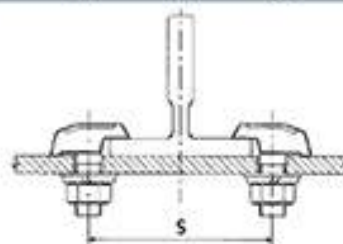
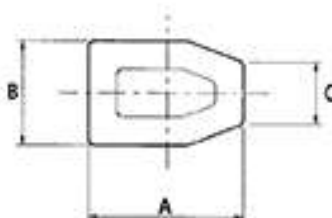
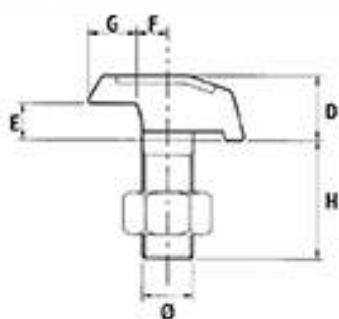
CERTIFICATIONS



Standard	Guide rail Norm	Raw Material	
		Cold drawn	Machined
ISO	7465	E 235 B	E 275 B
UNI	7465	E 235 B	E 275 B
ANSI	A17-1	..	ASFMA-36
AFNOR	NF P 82/251	E 24-2	E 28-2
JIS
BS	5655/9	4360/40A	4360/43A
DIN	15311	St 37-2	St 44-2

GUIDE CLIP

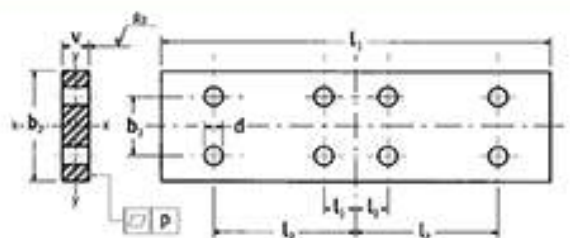
		Ø mm	A mm ±0,1	B mm ±0,1	C mm +0,0/0	D mm ±0,1	E mm ±0,1	F mm ±0,1	G mm ±0,1	H mm ±0,1	S mm ±0,1
T1	RT40	M10	32	22	15	12	5,5	5	11	23	50
	RT45										55
	RT50 - RF50										60
	RF65										75
T2	RT70 - RF70 - RF70.9	M12	39	26	16	15	7,3	6,5	13	27	83
	RF75 - RP75										88
	RF82 - RP82										95
T3	RT80	M14	45	29	16	18,5	9,5	8	13	34	96
	RP78										94
	RF89 - RP89										105
	RF90 - RP90										106
T4	RP114	M16	50	34	16	20,5	10,5	8,5	15	40	131
	RP125										142
	RP127-1										144
T5	RP127-2 - RP127-2 c14	M18	55	37	18	23	13	11	17	42	149
	RP140-1 - RP140-2										162



FISHPLATE

	d mm	b ₁ mm ±0,1	b ₂ mm ±0,2	l ₁ mm ±0,1	l ₂ mm ±0,2	l ₃ mm ±0,2	v mm 0/+0,2	w ₁ cm ³	w ₂ cm ³	weight kg/pcs	bolt size
RT40	9	40	23	200	85	15	6	1,60	0,24	0,35	M 8x25
RT45	9	50	25	160	65	15	8	3,33	0,53	0,50	M 8x25
RT50	9	50	30	200	75	25	8	3,33	0,53	0,60	M 8x25
RT70	13	70	42	250	105	25	10	8,17	1,17	1,29	M 12x35
RT80	13	80	42	250	105	25	10	10,67	1,33	1,49	M 12x35
RF50	9	50	30	200	75	25	8	3,33	0,53	0,60	M 8x25
RF65	10	70	40	160	65	15	10	8,17	1,17	0,83	M 10x30
RF70	13	70	42	250	105	25	10	8,17	1,17	1,29	M 12x35
RF70-9	13	75	43	240	90	30	10	9,38	1,25	1,33	M 12x35
RF75	13	75	43	240	90	30	10	9,38	1,25	1,33	M 12x35
RF82	13	80	50,8	216	81	27	10	10,67	1,33	1,27	M 12x35
RF89	13	90	57,2	305	114,3	38,1	10	13,50	1,50	2,07	M 12x35
RF90	13	90	57,2	305	114,3	38,1	10	13,50	1,50	2,07	M 12x35

p = 0,2 mm



GOVERNOR - R1

Approved by TÜV Germany according to Directive 95/16/CE and standards EN81-1/2 and directive EN81-20/50. Available with protection cover and rope safety guard. With or without test grove.

R1
Pulley ϕ 300 monodirectional or bidirectional for rope diameter 6-8 mm.
Nominal speed up to 2,17 m/s.
Tripping speed from 0,41 m/s up to 2,50 m/s.

R1 250
Pulley ϕ 250 bidirectional for rope diameter 6-8 mm.
Nominal speed up to 1,91 m/s.
Tripping speed from 0,32 m/s up to 2,20 m/s.



GOVERNOR - R3

Pulley ϕ 250 monodirectional for rope diameter 6-8 mm. Approved by TÜV Germany according to Directive 95/16/EC and EN81-1/2 standards and 2014/33/EU directive and EN81-20/50 standards.

Nominal speed up to 1,24 m/sec.
Tripping speed from 0,48 up to 1,43 m/s.
Also available with protection carter.



GOVERNOR - XS240



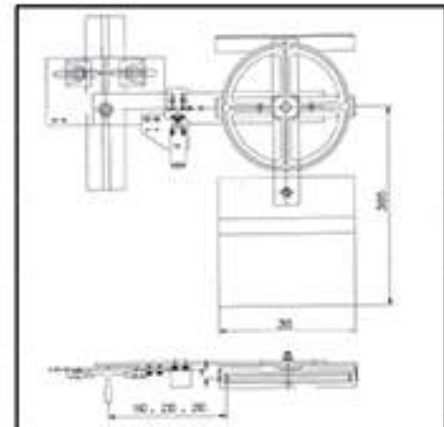
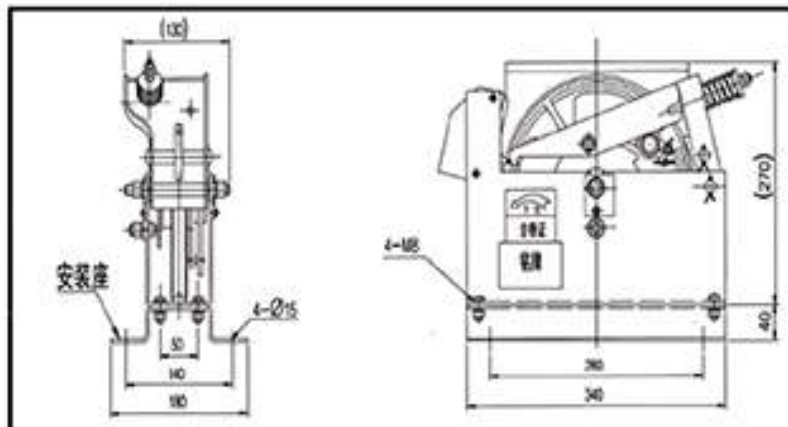
Technical characteristic

Speed : $V=0,25 \sim 2,5$ m/s

Wire rope diameter : 8mm

Pulley : 240mm

Tension force: 500 ~ 1600N



Traction machine & Inverter

Other spare parts

LOP & COP

Photosell

Wire rope & Flat cable

Governor

Guide rail

Door device



TECHNICAL CHARACTERISTIC

- High quality due to the use of the best components certified to international standards.
- Product certification in accordance with EN 50241.
- CE conformity
- HAR approval
- Made in Italy

Diameter (mm)	Diameter (mm)	Weight (Kg/mt)	Minimum Strength	
			1570N/mm ² kN	1770N/mm ² kN
8	0,53	0,223	31	33
9	0,60	0,287	38	42
10	0,65	0,337	48	52
11	0,72	0,417	56	63
12	0,80	0,487	68	75



DETAIL PRODUCT

Voltage U_0 / U : 0,75mm²: 300/500 U0
 Intestines: 12, 24 and 36
 Unused length: max 45m
 Itinerary: max 80m
 Operating speed: 4m / s
 Acceleration: 0,8m / s²
 Operating Temperature: 0 ~ 700C (Special Case: -30 ~ 700C)
 Belt diameter: natural belt (nearly 250 ~ 350mm)

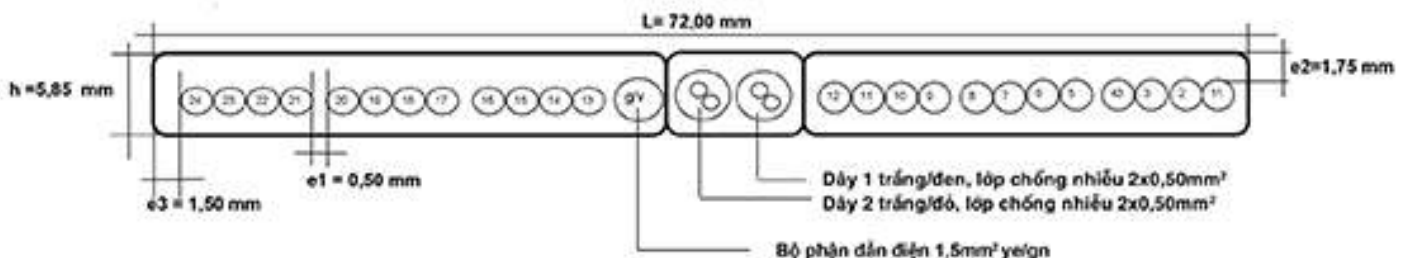
Color Code: Theo 227IEC71f(TVVb)
 Color cable: Black, numbered 1GNYE white
 Case color: gray or black



Dimension [mm ²]	Max diameter [mm]	Insulation thickness [mm]	Number of cores & core diameter	Dimensions SxL [mm]	Resistor values 20°C [Ohm/Km]	Weight [kg/km]
12x0,75	0,21	0,6	3x4	4x32	26,0	255
24x0,75	0,21	0,6	6x4	4x61	26,0	490

ANTI-INTERFERENCE CABLE

Flat cable H05VVH6-F made in Italia
 Flat cable 24*0,75
 Flat cable 24*0,75 + 1,5G/V + 2x2x0,5
 According to EURO standard EN50214 CEI 20-205 CEI 20-27
 Conductor: Nominal section 0,50mm², tinned copper wires (15 wires, diam.max 0,21mm material copper tinned, conductor arrangement according to IEC 60228, class 5
 Insulation: PE, type 2YI2, according to DIN VDE 0207, color wh, red, bl
 Stranding: 2 cores twisted together, element 1 wh/bl element 2 wh/red lay approx. 40mm
 Operating temperature: -20°C to+ 70°C
 Maxlift speed: 6,3m/s



Traction machine & Inverter

Other spare parts

LOP & COP

PhotoCell

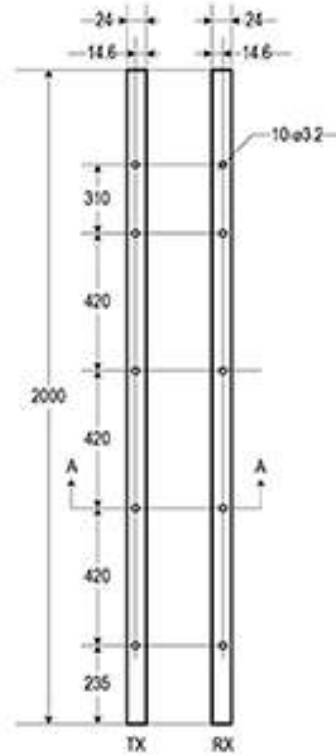
Wire rope & Flat cable

Governor

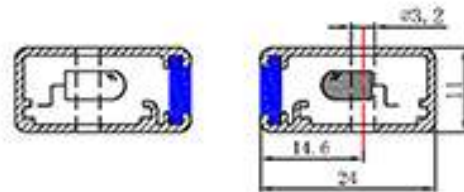
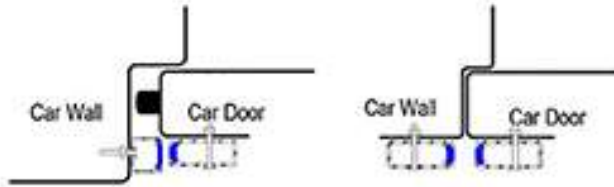
Guide rail

Door device

PHOTOCELL WECO 917A



917A6-A7 Mounting holes



WECO-917 A 6 I - AC220 - [] 3D configure

Power and system output options:

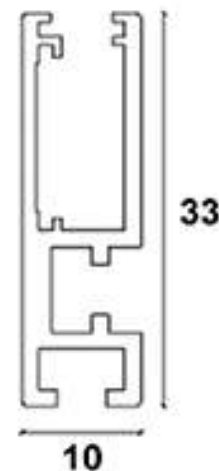
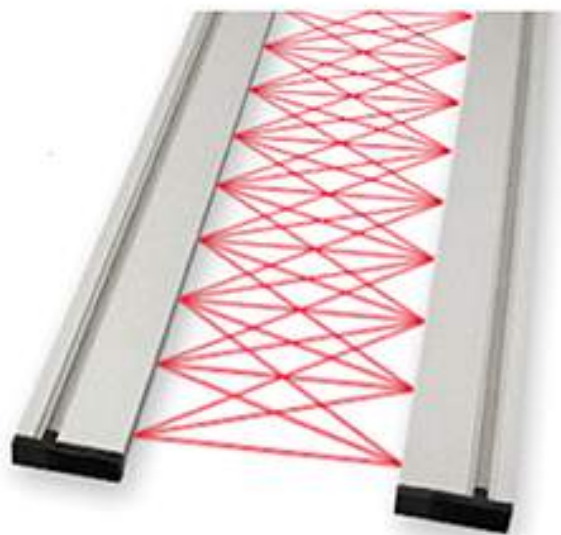
- AC220: AC220V±15%, 50/60Hz power box. 1NO/1NC relay output
- AC110: AC110V±15%, 50/60Hz power box. 1NO/1NC relay output
- DC24A: 24VDC±10% power box. 1NO/1NC relay output
- DC24B: 10-30VDC direct input. 1NO NPN output
- DC24C: 10-30VDC direct input. 1NC NPN output
- DC24D: 10-30VDC direct input. 1NO PNP output
- DC24E: 10-30VDC direct input. 1NC PNP output
- DC24F: 10-30VDC direct input. 1NC relay output
- DC24G: 10-30VDC direct input. 1NO relay output
- DC24H: 24VDC safety function power box

Connection Cable:

- 3.5m x 2pcs, for standard central-opening lift doors
- 2.5m, 4.5m x 1pcs, for side opening lift doors, see fig 1
- 2.5m, 4.5m x 1pcs, for new side opening lift doors, see fig 2
- 5m x 2pcs, for Two Panel central-opening lift doors

TX/RX Number:

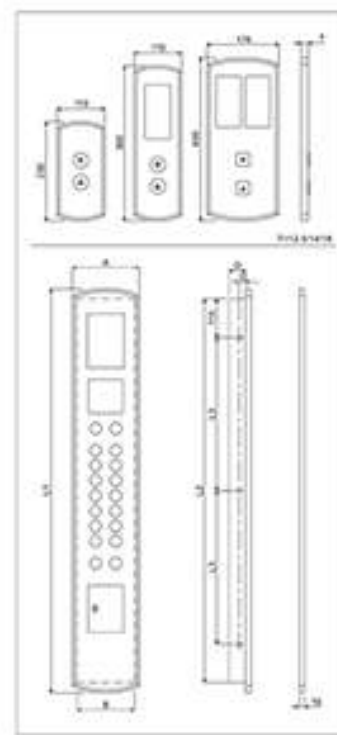
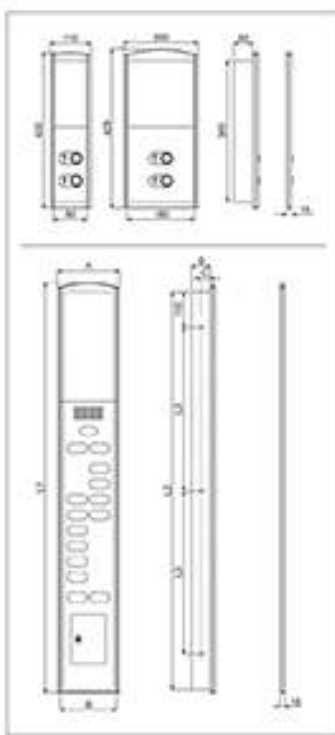
- 6: 17.0 (17 Diode sets)
- 7: 32.0 (32 Diode sets)



MODEL	B-LIFT	NEW C-LIFT
Dimensions (W x D x H)	9mm x 28mm x 2000mm	9mm x 24,5mm x 2000mm
Height detection	23mm - 1823mm	23mm - 1823mm
Beam	94-212	94-154
Detection distance	0 - 4000mm	0 - 4000mm
Moving vertically	+/-20mm	+/-20mm
Moving horizontally	+/-3mm	+/-3mm
Corner shift	+/-15°	+/-15°
Anti sunlight	>70.000 lux	>70.000 lux
IP	IP 55	IP 55
Temperature Voltage	-10 - 65°C	-10 - 65°C
Provide	P20/P22 output	DC 12V tp 32V
Output	P20-P22 output	NPN-NC/NPN-NO PNP-NC/PNP-NO

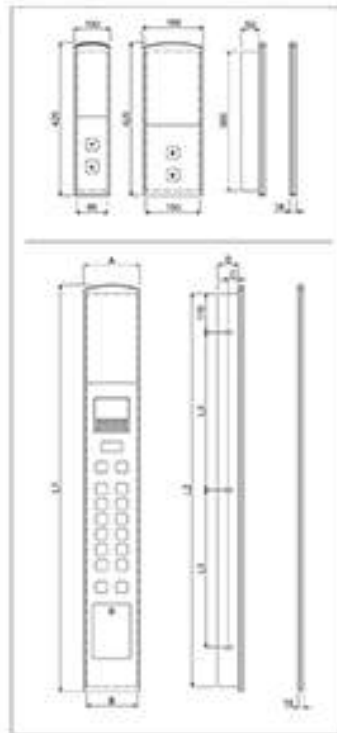
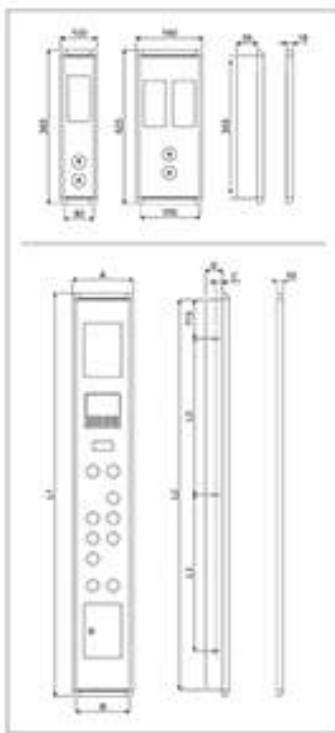
DETAIL PRODUCT

Extremely easy to install in new or existing lifts thanks to the versatile profile
 Very easy alignment between TX and RX
 Suitable for static and dynamic installations
 High immunity against light and electromagnetic interferences
 Diagnostic LEDs
 Flexible cables
 Time-out function with auto beam disabling of the obstructed diode
 Input voltage: from 18 to 30VDC / from 18V to 30VAC without control unit
 Optional 230V control unit with 5A relay inside



Dim	A	B	C	D	L1	L2	L3
STOPS							
2-10	200	180	30	60	1320	1280	525
12-18					1520	1480	625
19-28					1720	1680	725

Dim	A	B	C	D	L1	L2	L3
STOPS							
2-18	200	180	30	60	1180	1140	455



Dim	A	B	C	D	L1	L2	L3
STOPS							
2-12	180	160	20	50	1200	1160	465
13-22					1400	1360	565
23-32					1650	1610	690

Dim	A	B	C	D	L1	L2	L3
STOPS							
2-12	166	150	20	60	1200	1160	465
13-22					1400	1360	565
23-32					1650	1610	690

OTHER SPARE PARTS



Quạt lồng xoắn
Cross Flow Fan



Hộp nhớt tròn
Round oil can



Hộp nhớt vuông
Square oil can



Điện trở xả
Resistor
60Ω, 70 Ω, 80 Ω



Shoe bánh xe
Door slider
TH5A, T78, T89



Shoe dẫn hướng
Guide Shoes
TH5A



Shoe dẫn hướng
Guide Shoes
T78 - T89



Board điều khiển Châu Âu
Control board Europe



Cao su đệm sàn
Car bottom damping mat



Cao su dũa máy tròn
Traction damping mat



Cao su dũa máy vuông
Traction damping mat



Bánh nhông
Bearing stand / Bearing /
Driven wheel Module



Guốc trượt
Door slider



Hộp giới hạn
Limit Switch



Động cơ
Motor



Biến tần Panasonic
Panasonic Inverter



Khóa & Chìa khóa
Lock key



Sensor cửa
Bistable Switch



Thiết bị chặn cửa tầng
Door lock



Bánh xe đỡ dưới cửa car
Guide Wheel

Traction machine
& Inverter

Other spare part

LOP & COP

PhotoCell

Wire rope & Flat cable

Governor

Guide rail

Door device

OTHER SPARE PARTS



Bánh xe D56
Wheel D56



Bánh xe D72
Wheel D72



Pulley



Sill tầng
Landing door Sill SO



Sill car
Car Sill CO



Quạt MR12
MR12 Fan



Thắng MR12
MR12 brake



Ví phụ kiện cửa car
Door operator fixings



Ví cửa tầng
Landing door fixings



Tay vịn thang cuốn
Handrail escalator



Bậc thang cuốn
Handrail escalator



Xích thang cuốn
Chain escalator

PUSH BUTTON



MDL-3B



MDL-3B



TNA-3B



THL-3



TN-3



MDP-3



RLN-3

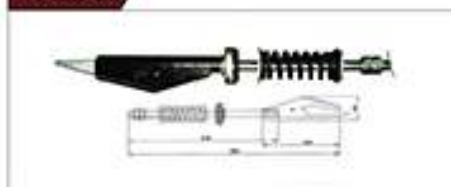


MAP-3B



MAS-3

TY CÁP D8



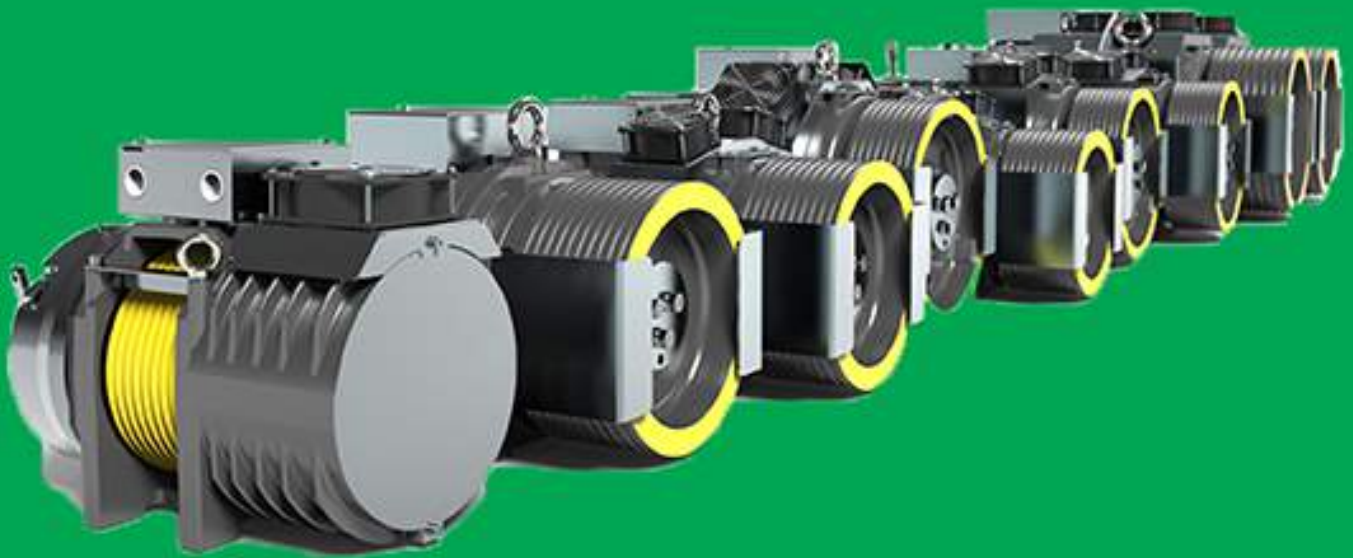
TY CÁP D10



TY CÁP D12





TRACTION MACHINE & INVERTER SICOR

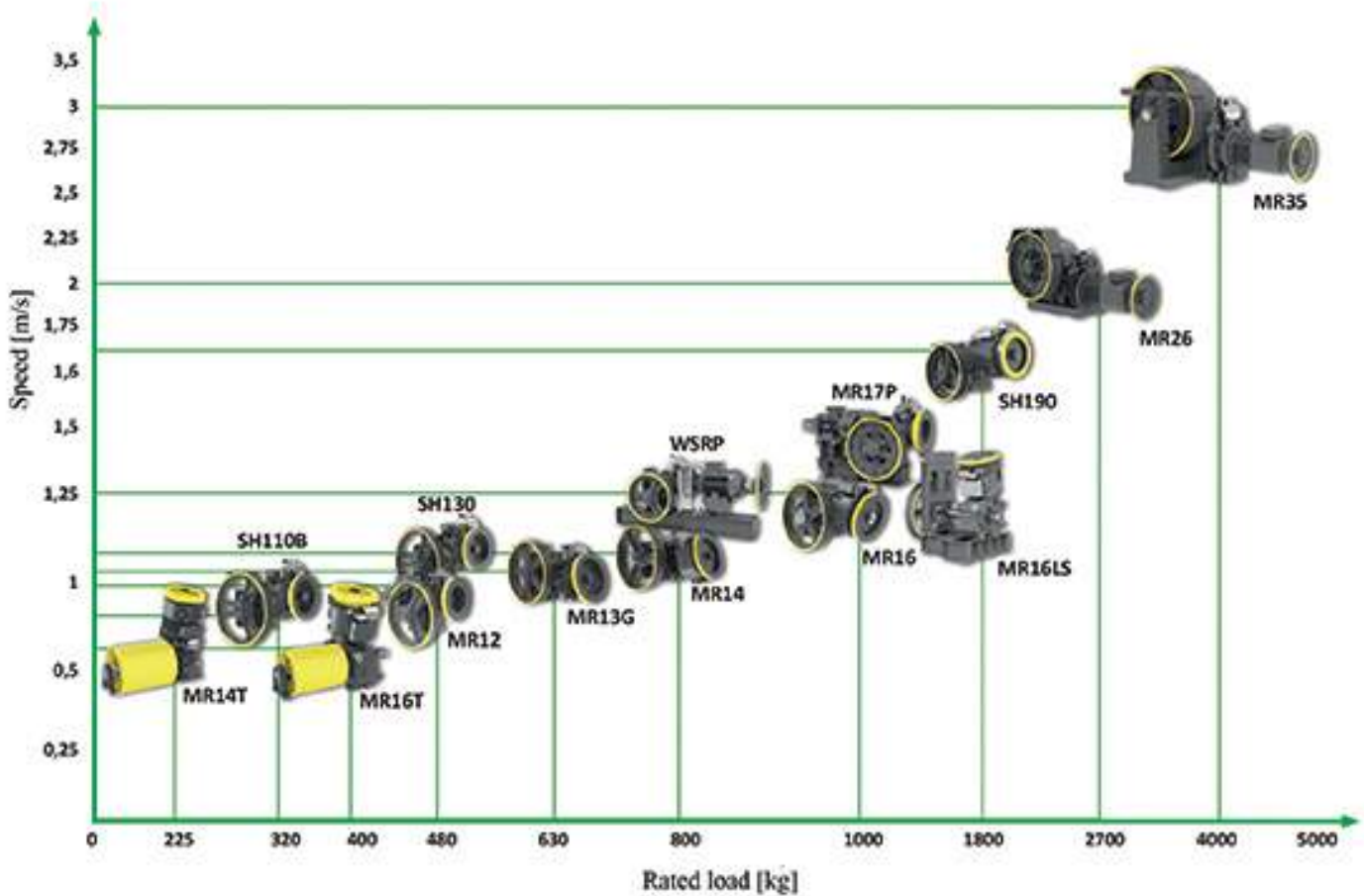


Model	Rated load up to [kg]	Speed range		Traction sheave [mm]	Max static load [kN·kg]
		50Hz [m/s]	60Hz [m/s]		
SH110B 	400	0,30 ... 2,19	0,37 ... 2,63	320,360,400,450,480, 520,550,600	20,6 - 2100
MR12 	550	0,34 ... 2,19	0,62 ... 2,63	340,420,440,480,550,600	25,5 - 2600
SH130 	550	0,32 ... 3,51	0,39 ... 4,21	320,360,400,450,480, 520,550,600,650,700	25,5 - 2600
MR13G 	630	0,72 ... 1,17	0,87 ... 1,40	480,520,550	28,4 - 2900
MR14 	950	0,25 ... 3,01	0,31 ... 3,61	360,400,450,480,520,560,600	32,4 - 3300
MR14T 	225	0,63	--	400	--
MR16 	1250	0,43 ... 4,02	0,51 ... 4,83	450,520,560,600,650,700	42,2 - 4300
MR16LS 	1250	0,43 ... 4,02	0,51 ... 4,83	450,520,560,600,650,700	42,2 - 4300
MR16T 	400	0,63	--	400	--
SH190 	1800	0,44 ... 3,76	0,53 ... 4,51	520,600,650,690,750	51 - 5200 58,9 - 6000 (TS)
MR26 	3000	0,41 ... 3,43	0,49 ... 4,11	560,600,650,690,750,800	64,7 - 6600 80,2 - 8175 (TS)
MR35 	5500	0,62 ... 3,93	0,75 ... 4,72	690,770,800,885	139,3 - 14200

SICOR GEARED MACHINE

Model	Rated load up to [kg]	Speed range		Traction sheave [mm]	Max static load [kN·kg]
		50Hz [m/s]	60Hz [m/s]		
 WSRP	800	0,38 ... 3,01	0,46 ... 3,61	360,400,450,480, 520,560,600	30,4 - 3100
 MR17P	1100	0,64 ... 4,14	0,77 ... 4,97	450,560,600,650,720	51 - 5200

ALL PRODUCT



Traction machine & Inverter

Other spare part

LOP & COP

Photo cell

Wire rope & Flat cable

Governor

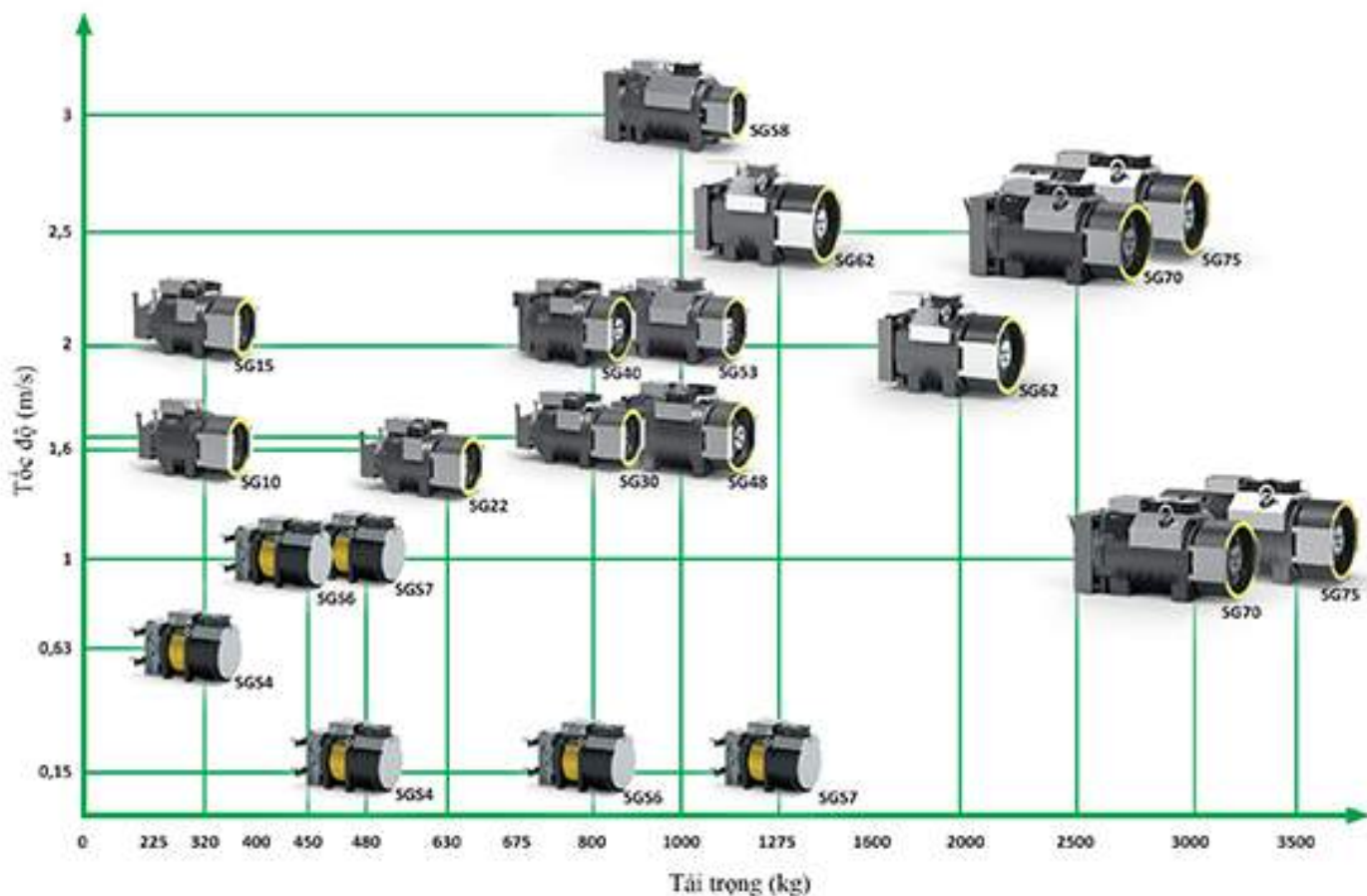
Guide rail

Door device

GEARLESS MACHINE

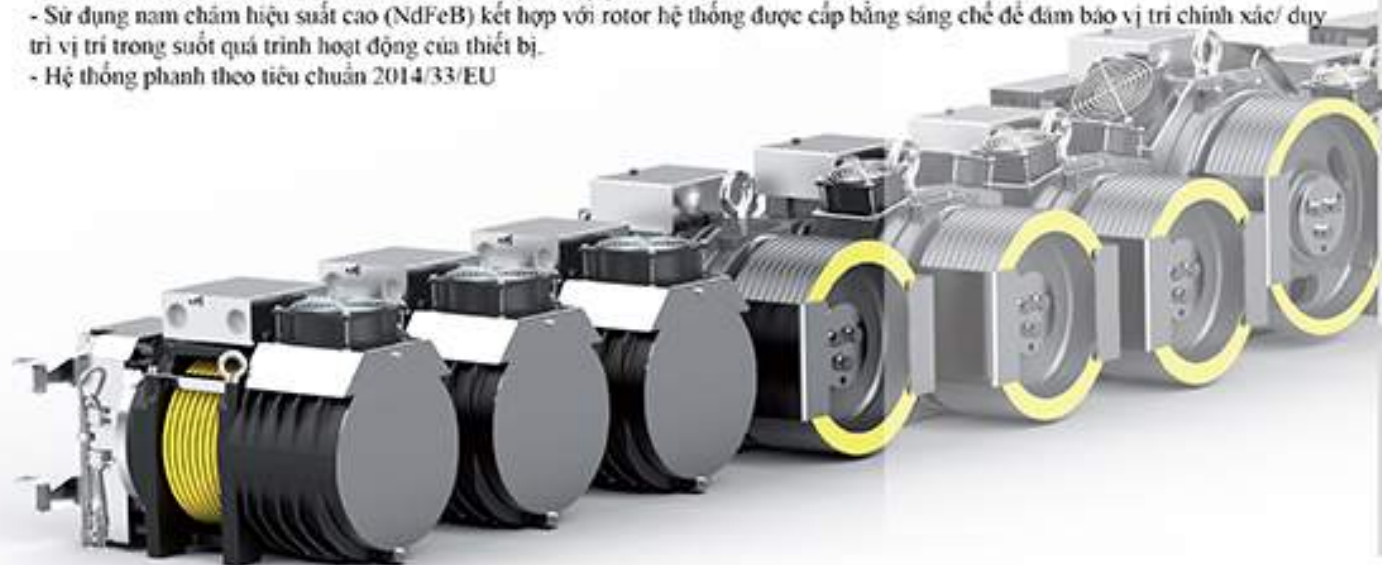
<i>Model</i>	<i>Rated load up to</i>	<i>Speed range 2:1</i>	<i>Traction machine</i>	<i>Static load</i>
	[kg]	[m/s]	[mm]	[kN·kg]
SGS4 	480	0,15 ... 1,00	120(*), 160(*), 200, 210	19,6-2000
SGS6 	800	0,15 ... 1,00	120(*), 160(*), 200, 210	19,6-2000
SGS7 	1000	0,15 ... 1,00	120(*), 160(*), 200, 210	19,6-2000
SG10 	800	0,63 ... 1,60	120(*), 160(*), 200, 210, 240, 270, 320	34,3-3500
SG15 	1275	0,63 ... 2,00	120(*), 160(*), 200, 210, 240, 270, 320	34,3-3500
SG22 	1600	0,63 ... 2,00	120(*), 160(*), 200, 210, 240, 270, 320	34,3-3500
SG30 	2000	0,63 ... 2,50	120(*), 160(*), 200, 210, 240, 270, 320, 360, 400	34,3-3500
SG40 	2000	0,63 ... 2,50	120(*), 160(*), 200, 210, 240, 270, 320, 360, 400, 440	34,3-3500
SG48 	1600	0,63 ... 2,50	120(*), 160(*), 200, 210, 240, 270, 320, 360, 400, 440	34,3-3500
SG53 	1600	0,63 ... 3,00	120(*), 160(*), 200, 210, 240, 270, 320, 360, 400, 440	39,2-4000
SG58 	2000	0,63 ... 3,00	120(*), 160(*), 200, 210, 240, 270, 320, 360, 400, 440	39,2-4000
SG62 	2000	0,63 ... 2,50	320, 360, 400, 440, 480, 520, 600	54-5500
SG70 	3000	0,63 ... 2,50	320, 360, 400, 440, 480, 520, 600	58,9-6000
SG75 	3500	0,63 ... 2,50	320, 360, 400, 440, 480, 520, 600	78,5-8000

BIỂU ĐỒ TỔNG HỢP TẤT CẢ SẢN PHẨM



TÍNH NĂNG

- Đạt tiêu chuẩn thang máy 2014/33/EU, và EN81-20, EN81-50.
- Động máy thiết kế cho thang máy không phòng máy (nhỏ gọn và hiệu quả).
- Động cơ sử dụng nam châm vĩnh cửu không cần bảo dưỡng động cơ.
- Hộp đựng motor bằng sắt đảm bảo chịu lực tối đa, ít tiếng ồn và giảm độ rung. Hộp có khoang hở giúp tản nhiệt tối ưu.
- Hộp đầu dây kim loại rộng đảm bảo sự tiếp xúc tốt và dễ dàng kết nối.
- Điện tử thiết kế tối ưu với hiệu suất tối đa trong không gian tối thiểu
- Sử dụng nam châm hiệu suất cao (NdFeB) kết hợp với rotor hệ thống được cấp bằng sáng chế để đảm bảo vị trí chính xác/ duy trì vị trí trong suốt quá trình hoạt động của thiết bị.
- Hệ thống phanh theo tiêu chuẩn 2014/33/EU



Máy kéo & biến tần

Khác

Bảng điều khiển

Thành phần biến cửa

Cấp thép & cấp điện

Bộ phận bảo tốc độ

Ray

Đầu cửa

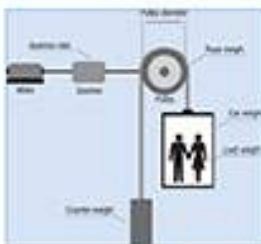
Universal mechanical structure

The extremely compact ADL300 reduces the size of conventional lift systems and it is suitable for installation in roomless systems.

Lift control system

Basic and advanced lift functions are incorporated in a single product, to ensure maximum comfort for all systems at all times.

- Speed control: EPC (Elevator Floor Control) function: separate function for independent management of short floors, landing zone, re-starting with lift not at floor and automatic deceleration point calculation.
- Position control: EPC (Elevator Positioning Control) function: separate function for independent management of direct arrival at the floor with internal position regulator and saving of floor distances (system autotuning).
- LIFT sequence: Typical sequence of input/output signals used in civil lift engineering applications such as UD management, braking, output contactor and door control.
- Parameters in linear unit: Possibility of selecting different engineering units (also with values for the US) for the main movement parameters, rpm (rpm) or m/s for speed, m/s², m/s³ (ft/s², ft/s³) for cabin acceleration.
- Lift mechanical parameters: Mechanical system parameters such as pulley diameter and speed ratio for converting system units and weights, system for calculating inertia and speed regulation for the desired response.
- Ramp generation: Independent configuration of acceleration and deceleration ramp parameters and of the 4-jerk values for maximum travelling comfort in the lift cabin. Two independent S-shaped ramps, selectable via digital input with 4 independent jerk settings. Dedicated deceleration ramp corresponding to the stop command.

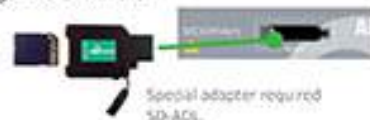


Integrated keypad

- 1-line x 4-character alphanumeric LED display with sign
- Simple parameter modification
- Menu and individual parameters displayed in numerical format
- Fast navigation keys
- Alarms / messages and startup wizard displayed in text format
- Resetting of alarms from keypad

SD Card port

The SD memory card makes saving and loading data and configurations with the ADL300 very simple.



Fieldbuses

The ADL300 integrates the most advanced fieldbus technology used in the lift sector:

- DCP3 for use in EPC (Elevator Floor Control) mode
- DCP4 for use in EPC (Elevator Positioning Control) mode
- CANopen and CANopen Lift (CIA*417) for lift control systems.

Configuration technology

The ADL300 is fitted with RS232 serial communication with Modbus RTU protocol.

Optional programming keypad

- 5-line x 21-character display
- Alphanumeric plaintext
- Complete information regarding each parameter
- Fast navigation keys
- Key for displaying the last 10 parameters that have been changed
- DISP key for rapid display of operating parameters
- Uploading/Downloading and saving of 5 complete sets of drive parameters



Safety[®] inputs

for use with a single output contactor or in contactorless mode.

Back-up power supply

The ADL300 guarantees operation even in the event of a power failure. It features an automatic return-to-floor function managed by an external device such as UPS or buffer battery via a singlephase 230V AC power supply (with EMS module).

ADL300 • INPUT DATA

Sizes - ADL300-...-4		1055	2075	2110	3150	3185	3220	4300	4370	4450	5550	5750
U _{in} • AC Input voltage	V _{ac}	three-phase network 230-400-480 Vac-15%+10%										
F _{in} • Input frequency	Hz	50/60 Hz, ±5%										

ADL300 • OUTPUT DATA

Sizes - ADL300-...-4		1055	2075	2110	3150	3185	3220	4300	4370	4450	5550	5750	
In • Rated output current (f_{sw} = default)													
@ U _{in} =230VCA	A	13,5	18,5	24,5	32	39	45	60	75	90	105	150	
@ U _{in} =400VCA	A	13,5	18,5	24,5	32	39	45	60	75	90	105	150	
@ U _{in} =460VCA	A	12,2	16,7	22	28,8	35,1	40,5	54	67,5	81	94	135	
PN mot (Recommended motor power, f_{sw}=default)													
@ U _{in} =230VCA	kW	3	4	5,5	7,5	9	11	15	18,5	22	30	37	
@ U _{in} =400VCA	kW	5,5	7,5	11	15	18,5	22	30	37	45	55	75	
@ U _{in} =460VCA	Hp	7,5	10	15	20	25	30	40	50	60	75	100	
Reduction factor													
	K _{t(0)}	0,95	0,95	0,95	0,95	0,95	0,95	0,95	0,95	0,95	0,95	0,95	
	K _{M(20)}	1,2	1,2	1,2	1,2	1,2	1,2	1,2	1,2	1,2	1,2	1,2	
Overload		200%*10 sec con frequenza d'uscita superiore a 3 Hz 150%*10 sec con frequenza d'uscita superiore a 3 Hz						180%*10 sec con frequenza d'uscita superiore a 3 Hz 150%*10 sec con frequenza d'uscita superiore a 3 Hz					
Maximum Switching frequency	kHz	10											
U₂ • Maximum output voltage		0,98 x U _{LN} (U _{LN} =AC input voltage)											
f₂ • Maximum output frequency	Hz	300											

DETAIL PRODUCT

The SICORVert drives, designed for new installations and modernizations, provides maximum safety, comfort, and reliability for all types of civil lift systems and offers customer lower installation and operating costs.

It is available in an integrated version, which combines the drive and control card in a single solution.

The modern software, developed for gearless systems in closed loop with absolute or incremental encoder, provides outstanding control.

Precise landing at the floor, with both direct landing and creeping, and load compensation at start give passengers an extremely comfortable ride.

The SicorVert's compact size can be integrated in contactor or contactorless configuration that make it perfect for machine room-less (MRL) applications.

- Available in a power range 5.5-7.5kw
- Control in speed
- Control in position
- Short floor management
- Off-floor detection
- Emergency single-phase power supply for floor return
- Flexible ramps management
- CANopen Protocol, CANopen CiA 417 Protocol
- Integrated Breaking Unit
- External +24Vdc power supply
- CE marked

TRACTION MACHINE & INVERTER ZIEHL-ABEGG





ZIEHL-ABEGG



A pioneering spirit and the courage of innovation were the driving forces behind Emil Ziehl's development of his first external rotor motor over a hundred years ago. With this he laid the corner stone for the success story of ZIEHL-ABEGG, with its headquarters in Kunzelsau, develops, produces and sells high quality, high-tech components: Fans, special electric motors and their perfectly adapted, state-of-the-art control technology. Still today, Emil Ziehl's pioneering spirit is the motivator for making good even better and finding new, revolutionary solutions. ZIEHL-ABEGG is based in Southern Germany but it is at home all over the world. At the worldwide production and sales sites, thousands of employees develop, produce and sell technical, economical and ecological progress. Welcome to the world of ventilation, control and drive technology.

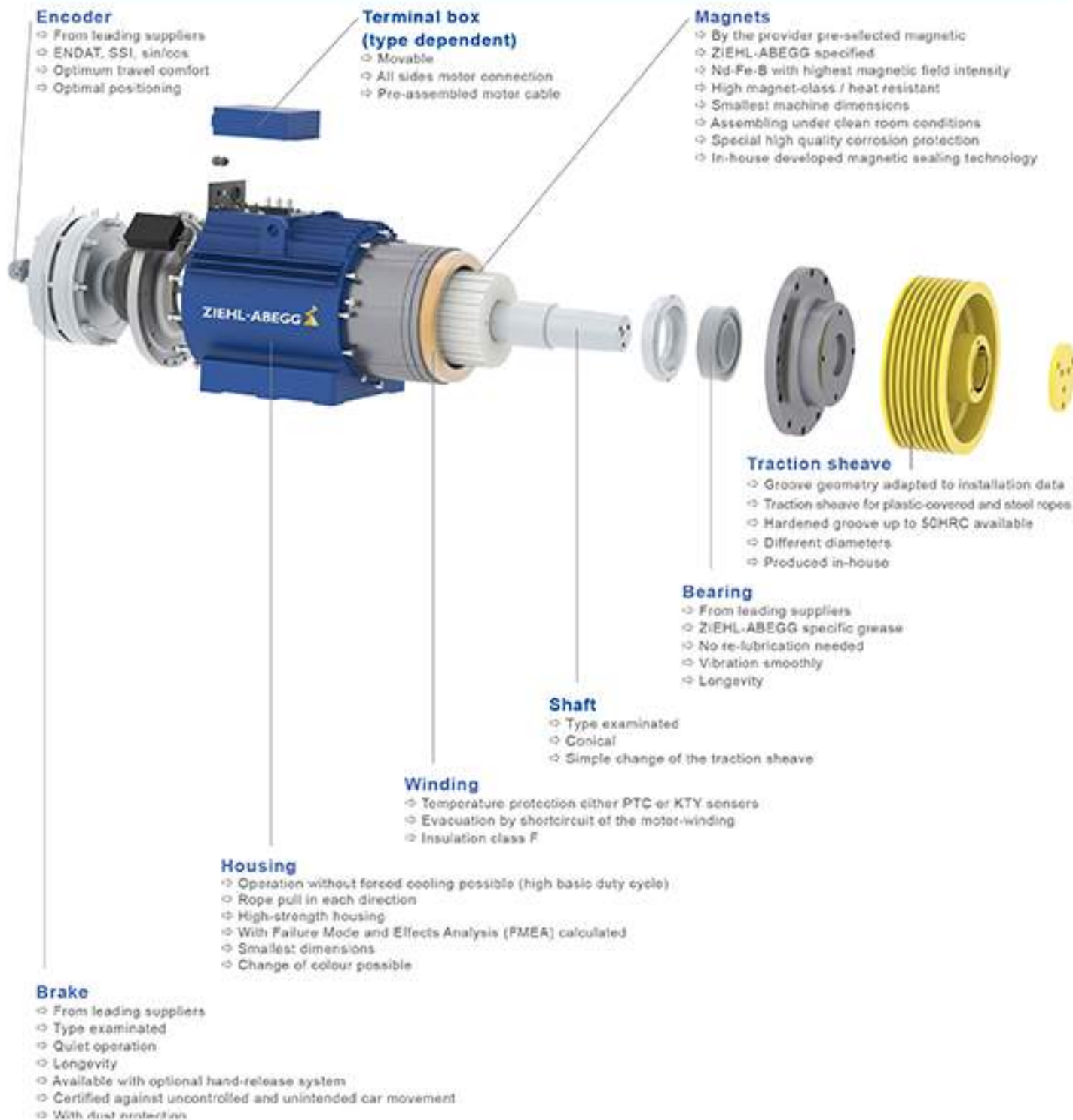
Elevator technology from ZIEHL-ABEGG

Millions of people ride elevators day for day all over the world. They ride quickly, safely and comfortably up to their offices, apartments or hotel rooms and back down again. They have good reason to trust this technology because many elevator manufacturers put their trust in the decisive contribution that ZIEHL-ABEGG makes to reliability and drive comfort. It is the drive and control engineering, the "heart" and "soul" of the elevator. One of the reasons for the trust is ZIEHL-ABEGG's ability to adapt the motor and control engineering to the manufacturer's specific requirements regardless of how much space is available. Another good reason is the ZIEHL-ABEGG know-how based on their 100 years of experience. It is the visions of the elevator manufacturers that become reality in the drive and control systems made by ZIEHL-ABEGG.

ZATOP GEARLESS MACHINE

ZIEHL-ABEGG gearless machines

- ⇒ 100,000 Machines worldwide in operation
- ⇒ Long lasting experience in synchronous technology – since 1993
- ⇒ Suitable for machine-room-less as well as machine-room installation
- ⇒ Large spectrum of machines for different loads
- ⇒ Simple to install
- ⇒ Safe calculation with ZIEHL-ABEGG ZAlift software
- ⇒ Short delivery time of the machines



ZATOP GEARLESS MACHINE

Suspension	Rated load max. kg	Traction sheave mm	Axle load kg	ZAtop	
2:1	1050	120...160	2400	SM132/A	
	1050	120...200	2400	SM132/B	
	1125	160...240	1900...2500	SM160	
	1050	200...240	1500...2500	SM180	
	1200	200...240	1850...2400	SM190	
	1600	160...500	1850...3600	SM200	
	2500	240...520	4500	SM210	
	2000	240...640	5300	SM225	
	3000	320...640	6000...8000	SM250.45 SM250.60 SM250.80	
	3500	450...520	13000	SM250.100	

Traction machine
& Inverter

Other spare part

LOP & COP

PhotoCell

Wire rope & Flat cable

Governor

Guide rail

Door device

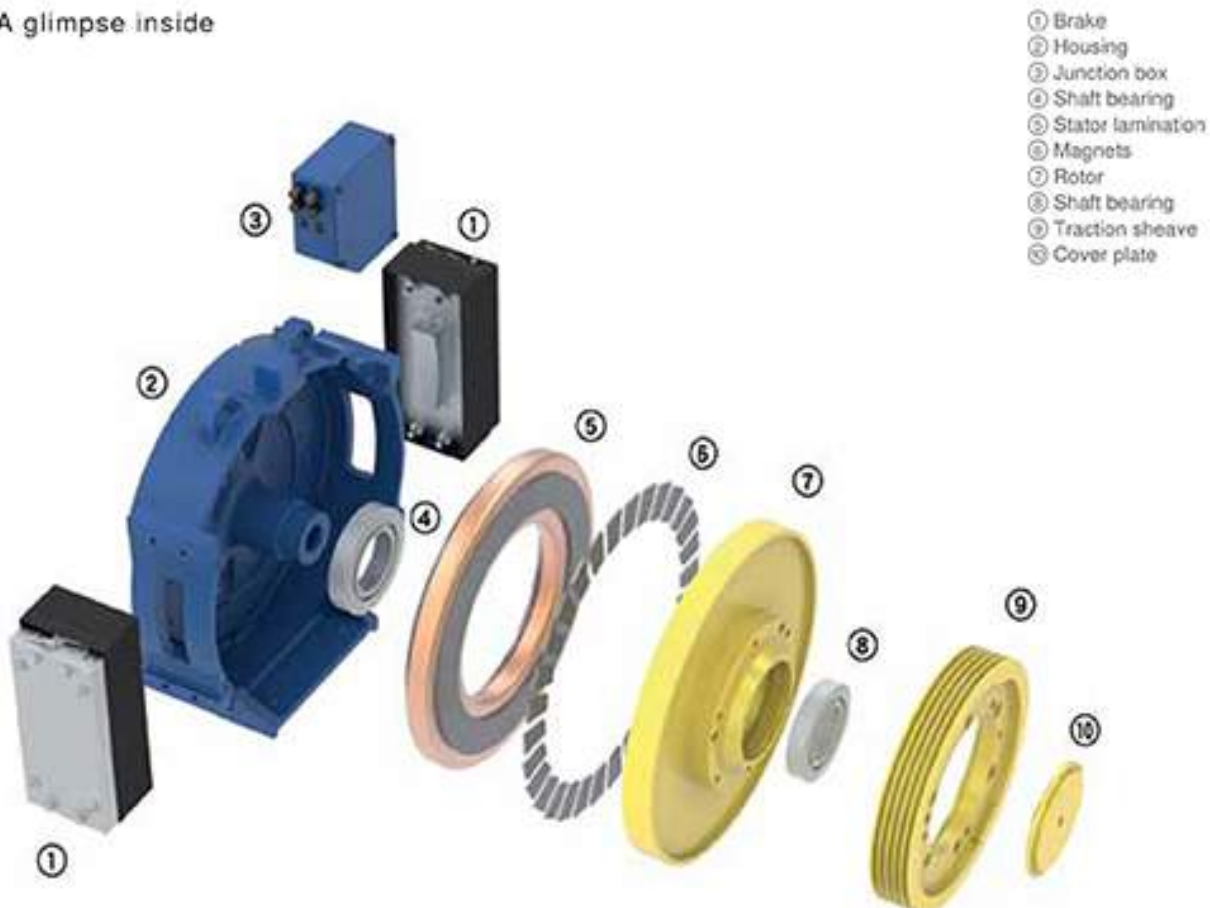
ZADISC GEARLESS MACHINE

The flat elevator machine for elevators with and without a machine room

Properties

- Gearless synchronous motor actuated by NdFeB permanent magnets
- Disc rotor motor
- According to the provisions of the Lift Directive 2014/33/EU
- Very flat design for optimum shaft dimensions
- Optimised for fixing at the guide rail
- High efficiency
- Noise emissions <math>< 50 \text{ dB(A)}</math>
- Insulation class F (155°C) with temperature monitoring via PTC thermistor
- Travel speeds of up to 1.6 m/s
- Rope diameter of 8.0 mm to 12.0 mm
- Traction sheaves:
 - Replaceable
 - Diameter of 400 mm to 450 mm
- Motor brake:
 - Safety component according to Lift Directive 2014/33/EU
 - Separately actuated brake circuits
 - Deployable as an element of the ascending car overspeed protection means
 - Deployable as part of the protection against unintended car movement
- Can be equipped with conventional encoder systems (e.g. EnDat, SSI, SinCos)
- Optimum package solution with ZAdyn frequency inverter from ZIEHL-ABEGG

A glimpse inside



Properties

- Gearless synchronous motor actuated by NdFeB permanent magnets
- External rotor motor
- According to the provisions of the Lift Directive 2014/33/EU
- Very flat design for optimum shaft dimensions
- Optimised for easy installation in the shaft
- High efficiency
- Noise emissions < 50 dB(A)
- Insulation class F (155°C) with temperature monitoring via PTC thermistor
- Travel speeds of up to 3.0 m/s
- Rope diameter of 8.0 mm to 16.0 mm
- Traction sheaves:
 - Replaceable
 - Diameter of 400 mm to 680 mm
- Motor brake:
 - Safety component according to Lift Directive 2014/33/EU
 - Separately actuated brake circuits
 - Deployable as an element of the ascending car overspeed protection means
 - Deployable as part of the protection against unintended car movement
 - Mechanical hand release (optional)
- Can be equipped with conventional encoder systems (e.g. EnDat, SSI, SinCos)
- Optimum package solution with ZAdyn frequency inverter from ZIEHL-ABEGG

A glimpse inside



- ① Brake
- ② Housing
- ③ Stator lamination
- ④ Shaft seal ring
- ⑤ Shaft bearing
- ⑥ Magnets
- ⑦ Rotor
- ⑧ Traction sheave
- ⑨ Traction sheave bracket



Description

- Wall mounting in the machine room or elevator shaft
- Mounting in the control cabinet
- Line reactor, radio interference filter integrated
- Space-saving installation by compact design
- Operation of synchronous motors (ZAdyn4CS) and asynchronous motors (ZAdyn4CA)
- Open-Loop-Operation of asynchronous motors
- Standby function
- 4-line display with plain text display
- Minimal noise generation and low energy consumption through controlled ventilation
- Automatic operating-curves default
- Switching frequency: 4...16 kHz (automatic adaptation)
- Applied EMC standards: EN 12015 and EN 12016
- Protection class: IP20

Interfaces

Controller

- Programmable inputs and outputs
 - 5 x relay output (potential-free)
 - 12 x digital inputs (24 VDC)
- DCP
- CANopen-Lift
- All interfaces galvanic isolated

Encoder

- Incremental
 - HTL / TTL / Sine
- Absolute
 - EnDat / SSI / SinCos / Hiperface / BiSS-C
- Simulation for controller

Monitorings

- Temperature monitoring brake resistor
- Temperature monitoring motor (in accordance with EN 61800-5-1:2008-04)
- Motor contactor monitoring (with optional use of motor contactors)
- Brake release monitoring in accordance with EN 81-20

Contactless operation:

- STO (Safe Torque Off) according to IEC 61800-5-2 (SIL 3) or EN ISO 13849 category 3, Performance Level e with protection class IP20.
- Requirements of EN 81-20 to the disconnection of the power supply of the drive are met!

Technical data

Type	Article no.	Phases	Nominal voltage VAC	Mains frequency Hz	Motor power typ. W	Nominal current A	Current max. A	Duty cycle %	Weight kg
ZAdyn4CA 011	352194	3-	400	50/60	4.6	11	20	60	11.60
ZAdyn4CS 011	352201								12.00
ZAdyn4CA 013	352195				5.5	13	24		12.60
ZAdyn4CS 013	352202								12.80
ZAdyn4CA 017	352196				7.5	17	31		13.00
ZAdyn4CS 017	352203								13.20
ZAdyn4CA 023	352197				11	23	42		14.10
ZAdyn4CS 023	352204								14.30
ZAdyn4CA 032	352198				14	32	58		16.40
ZAdyn4CS 032	352205								16.60
ZAdyn4CA 040	352206				19	40	72		32.40
ZAdyn4CS 040	352216								32.60
ZAdyn4CA 050	352207				24	50	90		33.30
ZAdyn4CS 050	352217								33.50
ZAdyn4CA 062	352208				30	62	112		36.20
ZAdyn4CS 062	352218								36.40
ZAdyn4CA 074	352209				37	74	134		36.40
ZAdyn4CS 074	352219								36.60

Features

- MMC / SD card interface for data backup and exchange
- USB interface for ZAmom software (via ZApad)

Options

- External ZApad operating terminal; 4-line display with plain text display
- Electronic brake control ZAsbo4
- ZAmom software

Evacuation mode

Supply during power failure through:

- EVAC 3C evacuation unit
- Uninterruptible power supply (UPS)

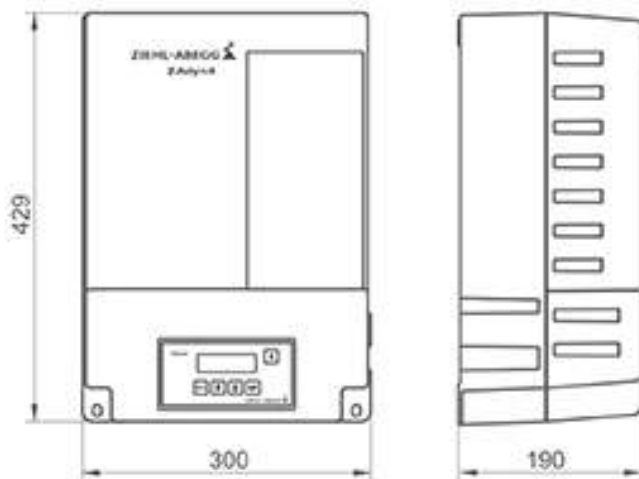
Electromagnetic compatibility

Compliance with EN 12015 and EN 12016 through integration of line reactor and radio interference filter in the ZAdyn4C.

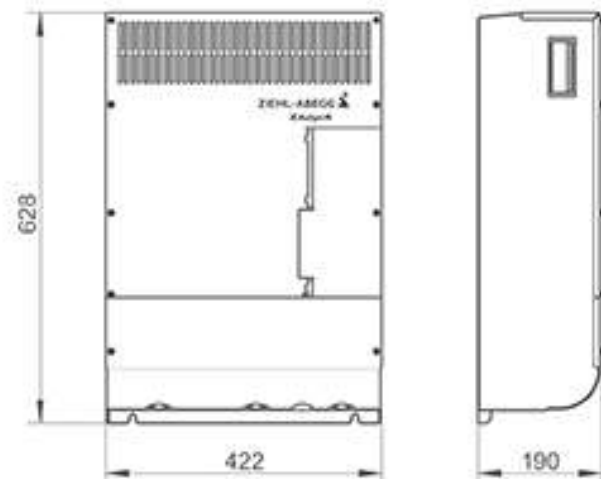
Frequency inverter	Brake resistor	Article no.
ZAdyn4C 011	BR11-A	357171
	BR14-A	357195
	BR17	357216
ZAdyn4C 013	BR14-A	357195
	BR17	357216
ZAdyn4C 017	BR17	357216
ZAdyn4C 023	BR25	357217
ZAdyn4C 032	BR25	357217
	BR50	357218
ZAdyn4C 040	BR50	357218
ZAdyn4C 050	BR50	357218
ZAdyn4C 062	BR50	357218
ZAdyn4C 074	BR50	357218
	BR100-A	357214

Dimensions mm

ZAdyn4C 011-032



ZAdyn4C 040-074



Traction machine
& Inverter

Other spare parts

LOP & COP

Photocell

Wire rope & Flat cable

Governor

Guide rail

Door device



CERTIFICATO N. 9102.SICR
 CERTIFICATE N. 9102.SICR

SI CERTIFICA CHE IL SISTEMA QUALITÀ DI
 WE HEREBY CERTIFY THAT THE QUALITY SYSTEM OPERATED BY
SICOR SPA
 VIALE CAPRONI 32 - ZONA INDUSTRIALE - 38068 ROVERETO (TN)
 UNITA OPERATIVE (OPERATING UNITS)

VIALE CAPRONI 32 - ZONA INDUSTRIALE - 38068 ROVERETO (TN)
 E CONFORME ALLA NORMA / IS IN COMPLIANCE WITH THE STANDARD
ISO 9001:2015

PER LE SEGUENTI ATTIVITÀ / FOR THE FOLLOWING ACTIVITIES
 Progettazione e produzione di organi per ascensori e montacarichi
 Design and manufacturing of gear boxes for lifts and elevators

Il titolare dell'attività, riportando l'eventuale numero ISO 9001:2015, assume la piena responsabilità dell'attuazione del sistema di gestione della qualità. L'aderenza al presente regolamento è valida fino a 31/12/2015. L'aderenza al presente regolamento è valida fino a 31/12/2015. L'aderenza al presente regolamento è valida fino a 31/12/2015.



To any body it may concern

We, SICOR S.p.A - Viale Caproni 32 38068 Rovereto (TN) - Italy, Tel.: +39 0464 48111, Fax: +39 0464 484100, hereby wish to declare that the following company listed below is a preferential distributor of Sicor spa for the state of Vietnam:

THUAN ANH TRADING AND SERVICE CO.LTD.
 85 NGUYEN SON, PHU THANH WARD,
 TAN PHU DISTRICT, HOCHIMINH CITY
 TEL.: +84 8 39789861

1 Specifiche - Equivalenza - Consegna - Esportazione	V / 0745060	COPIA
MANUFACTURER/EXPORTER SICOR S.p.A. Viale Caproni, 32 38068 ROVERETO (TN) ITALY	N. Prog. 30062018 N. Proc. 17862018	
2 Destinazione - Destinazione - Consegna - Destinazione	UNIONE EUROPEA UNION EUROPEENNE EUROPEAN UNION UNION EUROPEA CERTIFICATO DI ORIGINE CERTIFICAT D'ORIGINE CERTIFICATE OF ORIGIN - CERTIFICADO DE ORIGEN 1 Paese d'origine - Pays d'origine - Country of origin - País de origen	
APPLICANT THUAN ANH TRADING AND SERVICE CO., LTD. 85 NGUYEN SON, PHU THANH WARD TAN PHU DISTRICT, HOCHIMINH CITY VIETNAM	ITALY COMUNITA EUROPEA 2 Destinazione - Remarque - Remarque - Observaciones REF. OUR INVOICES NR. 2706/V1R, 2706/V1R DT.09/07/2018 AND NR. 2706/P1R DT. 11/07/2018 GOODS OF ITALIAN ORIGIN	
3 Descrizione quantitativa e trasporto (descrizione quantitativa e trasporto) Quantitative details - Expédition	7 Quantità Quantity Quantité Cantidad	



MONTEFERRO SPA.
 Via Como n° 11 - 21020 Monvalle (Varese), Italy.
 Via Perin del Vaga n° 12 - 20156 Milano, Italy.
 Tel +39 0332 79 88 79 - Fax +39 0332 97 10 16

To Whom It May Concern

We, Monteferro - Via Como 11- 2120 Monvalle (Varese) - Italy, Tel.: +39 0332 798879, Fax: +39 0332 971016, specialized in providing guide rail, hereby wish to declare that the following company below is our distributor in Vietnam:

THUAN ANH TRADING AND SERVICE CO.LTD.
 85 NGUYEN SON, PHU THANH WARD,
 TAN PHU DISTRICT, HOCHIMINH CITY, VIETNAM.
 TEL.: +84.8.39789860
 Tel. +84.8.39789861.

provided all products



CERTIFICATE

1 Address - Consignor - Expéditeur - Expeditor SIEHL-ABEGG SE Heinz-Ziehl-Strasse D - 74653 Künzelsau Federal Republic of Germany +49-7140-16264	L 18409480	ORIGINAL
2 Empfänger - Consignee - Destinataire - Destinatar Thuan Anh Trading and Service Co., Ltd. Phu Thanh Ward Nguyen Son Str., 85 100000 Tan Phu Distr., HCM City Vietnam	EUROPÄISCHE UNION EUROPEAN UNION - UNION EUROPEENNE - UNION EUROPEA URSPRUNGSZEUGNIS CERTIFICATE OF ORIGIN - CERTIFICAT D'ORIGINE CERTIFICADO DE ORIGEN	
4 Angaben über die Beförderung - means of transport - expédition - expedición KRAFTFAHRZEUGE	3 Ursprungsland - Country of origin - Pays d'origine - País de origen as mentioned in field 6 5 Bemerkungen - remarks - observations - observaciones 01810498 - Issued retrospectively - dated: 02.07.2018	
6 Laufende Nummer, Zeichen, Nummern, Anzahl und Art der Packstücke, Warenbezeichnung Item no., marks, nos., number and kind of packages, description of goods No. de doc., marquage, nos., nombre et nature des colis, description de marchandises No. de orden, marcas, nos., cantidad y naturaleza de los bultos, descripción de las mercancías	7 Menge Quantity Quantité Cantidad 1 EK-PALLAT 2 CABE (S) 6 COLLET MARKED 1N 18151275, 1N 18151291, 1N 18211914, 1N 18220361, 1N 18220365, 1N 18220373 1.) 14 PCB Traction drive lift with electric motor	

The Certification Body
 of TÜV SÜD Management Service GmbH
 certifies that

ZIEHL-ABEGG
ZIEHL-ABEGG SE
 Heinz-Ziehl-Strasse
 74653 Künzelsau
 Germany

has established and applies
 a Quality Management System for

Development, production and distribution of
 industrial fans, electric power and control systems
 including the sites and scope of application
 see enclosure.

An audit was performed, Report No. 707076145.
 Proof has been furnished that the requirements
 according to

ISO 9001:2015

are fulfilled.
 Certificate is valid from 2017-10-12 until 2020-10-11.
 Certificate Registration No.: 12 100 64242 TMS.

H. Siegel
 Product Compliance Management





**HIGH QUALITY
LUXURY BRANDS**

5 - 85/1A Nguyen son street, Phu thanh Ward, Tan Phu District, HCM city



Tel: (028) 3978 9860 - Fax: (028) 3978 9861



info@thuananh.com.vn



<http://thuananh.com.vn>

